

THE PREMIERE PLAYHOUSE
PRESENTS



ORPHEUM
THEATER CENTER

June 12 - 22, 2025

www.thepremiereplayhouse.com



FRIENDS OF DOLLY PARTON

Forget about banker's hours. For the past 140 years, our teammates have worked 9 to 5 and then some to help grow and strengthen the Sioux Falls region.

In 2002, we brought the country music legend herself right here to downtown Sioux Falls — where she donated a performance at the Washington Pavilion to raise funds for the Imagination Library in South Dakota. More than 2,000,000 books have been delivered to children in our state because of that collaboration.

You can read the short story on our website. And if you're looking for a bank that gives back, come check us out; our hours are 8 to 5:30 (for what it's worth).



FirstNationalBank

www.fnbsf.com The First National Bank in Sioux Falls® Member FDIC



100 S Phillips Ave, Sioux Falls



(605) 335-5200



fnbsf.com

June 12 - 22, 2025



**THE PREMIERE
PLAYHOUSE**

Presents

**Dolly Parton's
9 to 5**

Stage Directors
Brittney Lewis
Abby Schwedhelm

Music Director
Clay Ackerman

Stage Manager
Michelle Smith

Sound Designer
Mal Lukomski

Costume, Hair & Makeup
Designer
Brittney Lewis

Scenic Designer
Jill Clark

Paint & Properties
Coordinator
Abby Kustak

Choreographers
Magen Richeal
Shannon Dancier

Lighting Designer
Corey Shelsta

RIGHTS

Music and Lyrics by **Dolly Parton**

Book by **Patricia Resnick**

Orchestrator by **Bruce Coughlin**

Arrangements and Additional Orchestrations by **Stephen Oremus &
Alex Lacamoire**

Based on the 20th Century Fox Picture

Originally produced on Broadway by Robert Greenblatt, April 2009

9 to 5, The Musical is presented through special arrangement with Music Theatre International (MTI). All authorized performance materials are also supplied by MTI. www.mitshow.com

WARNINGS

Please be aware that this production contains the use of flashing lights, moments of intensity, use of a prop gun, and atmospherics.

**FULL COLOR DIGITAL
COPY OF PROGRAM**



www.thepremiereplayhouse.com/digital-programs

WANT A
BANK THAT
SUPPORTS
YOUR
BIG
PICTURE?

CONTACT US TODAY:

800.843.1552

WWW.BANKEASY.COM/SIOUXFALLS



Member
FDIC



Melissa Baker,
M.A., CCC-A, FAAA

Elizabeth "Libby" Benson,
Au.D., CCC-A, FAAA

Hear what you've been missing.

We are an advanced hearing practice that specializes in
diagnosis, treatment, and prevention of hearing loss
for all ages.



**BAKER AUDIOLOGY
& HEARING AIDS**

605.610.2886 • siouxfallshearing.com



Hours: Mon-Thurs 9am-5pm • Fri 9am-12pm
429 W 69th St • Sioux Falls, SD
(Southwest Corner of 69th St. and Minnesota Ave.)



Custom print
and marketing
solutions for
your business.

From marketing materials to signage,
and everything in between, the experts at
AlphaGraphics can help your brand
get noticed and get business.

alphagraphics®

605.334.7333

www.us451.alphagraphics.com



PRINT



MARKETING



SIGNS



TECHNOLOGY





THANK YOU TO FIRST PREMIER & FIRST PREMIER BANKCARD

The Premiere Playhouse would like to take this opportunity to express our heartfelt appreciation to First Premier & First Premier Bankcard - Our sponsor for Seasons 19 - 22!



First PREMIER Bank
Member FDIC
PREMIER Bankcard



Friends of The Premiere Playhouse

EXECUTIVE PRODUCER (\$10,000+)

Sanford, T. Denny

Sanford Health

**South Dakota Arts
Council**

First National Bank

First PREMIER Bank

Kirby, Dan & Arlene

**The Wanda Covington
Endowment Foundation**

Cowan, Randy & Ann

**MLAEA Charitable
Fund of the SFAFC**

**Dr. Kirke & Dorothy
Wheeler Foundation**

**Weisser, Kathy & Bob
Culver's**

Giving Hope Inc
**Sioux Falls Area
Community Foundation**

Knudson, De & Dave

Midco Communications

SDN Communications

**Midwest
Communications**

Gannett Foundation

**Results Townsquare
Media**

GilChrist Foundation

PRODUCER (\$5,000+)

**Davenport, Evans, Hurwitz
& Smith, LLP**

**Mary Chilton DAR
Foundation**

First Bank & Trust

Native Nations Cannabis

Haverly, Tammi & Jon

Sandhills Global Inc.

**Lloyd Properties & Property
Holdings**

**South Dakota Humanities
Council**

Marketbeat

**Tuntland, Sarah
Nelson, Bob**



SPONSOR (\$1,000+)

Arts Midwest GIG Fund, Avera, Charles and Kari Bigelow, CNA Surety, Kevin Cole, Crave Food & Drink, Dickinson Travel, Effervescent Voice Academy, First Interstate Bank, Furniture Mart USA, Gordon Flesch Company, Marty Hagemann (In loving memory of Theamarie Hagemann), Sarah Jennings, Joyce DeGroot Community Theater Endowment of the SFACF, Bekki Kniep, Koch Hazard, Lamar Advertising, Luxury Auto Mall of Sioux Falls, Inc, Mary Chilton DAR Foundation, Mary's Mountain Cookies, Modern Woodmen, Natural Grocers, Norman and Melanie Bliss Family Fund of the SFACF, RBS Sanitation, Sioux Empire United Way, Misty Smoot Cotton, Melinda Sorensen, Todd & Erica Stahl, StartUp Sioux Falls, Sioux Falls State Theater, Clinton Store, Amber & Matthew Sumner, Trucks-N-Trykes, Virginia Harrington Charitable Fund of the SFACF, Steve Veenhof, Wellmark, Kirke & DaNeil Wheeler

LEAD ROLE (\$500+)

AARP South Dakota, ABC Rentals, Adobe Acrobat, Alphagraphics, AOK Sanitation, Tiffany Ardoin, Baker Audiology, Barrel House, James Boeding, Jamie Bowden, Kelly Boyd, Dakota Vascular, Dental Wellness, Fair Tax, Inc., Nadene & James Fishback, Mark and Nancy Hallenbeck, Hjellming Construction, Thomas Kapusta, Kimberly & Robert Kontz, Abby & Casey Kustak, Levitt at the Falls, Bruce Mair, Oliver Mayes, Mary McClung, Todd Nelson, Scott Ostman, Pizza Ranch, Voyage Federal Credit Union, ZenBusiness

SPOTLIGHTS (\$1+)

See all TPP friends, sponsors, and donors by visiting our website. Every single one of you makes this season possible. Thank you!

Sponsor a show today at thepremiereplayhouse.com/sponsorships!

DADA

GASTROPUB

perfect for before or after the theatre!



full menu served late!



402 n main avenue

605-444-4266 • dadagastropub.com

all ages • tues - sat • open at 4pm

Parker's
BISTRO

DADA
GASTROPUB

ICON
EVENTS

A hospitality philosophy that aspires to deliver an excellent experience, welcoming all.



BAKING YOUR DAY SWEETER

From work days to weekends, we bake scrumptious cookies that are sure to make every day sweeter!

With over 20 flavors of cookies baked fresh daily, we can satisfy your sweet tooth and celebration needs! We also serve gluten-friendly cookies, brownies, ice cream, ice cream treats, and can cater any size celebration!

**Call 605-275-0060
or Order Online!**



701 N Phillips Ave, Suite 120
Sioux Falls, SD 57104
siouxfallcookies.com  

THE PREMIERE PLAYHOUSE

*would like to take this opportunity to
express our extreme gratitude to*



**Tammi & Jon
Haverly**

Sarah Tuntland

for sponsoring our production of



A Note From The Executive Artistic Director



Dear local theatre fans,

Welcome to *9 to 5*, the grand finale of Season 22 at The Premiere Playhouse. What better way to close our season than with this bold, empowering musical filled with humor, heart, and the unforgettable music of Dolly Parton? It's a celebration of resilience, friendship, and the power of people coming together – themes that resonate deeply with who we are as a community theatre. I express deep gratitude to our sponsors for this production, who make performances such as this possible: First Premier Bank & Premier Bankcard, South Dakota Arts Council, Tammi & Jon Haverly, Sarah Tuntland, Culver's, Sanford Health, and Townsquare Media Sioux Falls.

This moment marks more than the end of a season. It marks a thrilling new beginning. As you may have heard, The Premiere Playhouse is expanding – not just in vision, but in space. We are relocating our operational headquarters from the classroom/office space in the Orpheum Theater Center to a larger, multi-purpose facility in the historic Rock Island Plow Building, just across the street. This move allows us to grow our programs, reach more community members, and strengthen our role as a creative home for artists of all backgrounds and experience levels. This expansion would not be possible without the generous support of the Sioux Falls Area Community Foundation's Community Fund and the countless individuals and organizations who believe in our mission. We are currently seeking an additional \$30,000 in matching gifts to fully fund our first year in this new space and chapter – and we know that with your continued support, we'll reach that goal.

As part of our renewed commitment to accessibility, we are also lowering our mainstage ticket prices. It's a bold step, but we believe theatre should be truly affordable and inclusive – and we trust that this community will continue to stand behind us in return. A steadfast pair of supporters who continue to stay behind us are First Premier Bank and Premier Bankcard, who together have pledged \$25,000 a season for the next three years, totaling \$75,000, if we can get matching pledges to support our community-based programs. If you or someone you know is able to help us meet this goal please get in touch with me, a board director or another staff member as we'd love to have a conversation with you about the benefits of donating to non-profit community theatre and the potential impact your giving can make.

This season, we also laid the groundwork for three distinct programming pillars that will guide us into the future: Our Mainstage Series, which continues the legacy of high-quality productions right here at the Orpheum; The Artist Development Series, offering expanded opportunities for teens and adults to learn, grow, and shine; and The Underground Series, an exciting new venture into immersive, experimental, and cabaret-style work in partnership with Icon Entertainment, taking place in various downtown venues.

To our volunteers, you are the soul of this organization. Whether backstage, on stage, at the merchandise table, or building sets, you remind us daily what it means to serve with passion. To our sponsors and donors, thank you for believing in the power of local theatre to change lives. To our subscribers and patrons – your loyalty is the lifeblood of our productions. And to the artists who bring these stories, such as *9 to 5*, to life: your talents continue to inspire us all. Thank you for helping us dream bigger. Together, we're not just putting on plays – we're building a cultural home where all are welcome, and where creativity has room to grow.

Oliver Mayes

Executive Artistic Director

The Premiere Playhouse



AMY STOCKBERGER

REAL ESTATE

LIFETIME HOME SUPPORT



AMY STOCKBERGER REAL ESTATE HAS A SYSTEM AND STRATEGY FOR EACH STEP OF THE HOME BUYING AND SELLING PROCESS BEFORE, DURING AND FOREVER. YOUR LIFETIME HOME SUPPORT PARTNERS. #1 TEAM IN SD & RANKED #18 IN THE NATION.

ARE YOU READY TO START YOUR LIFETIME HOME SUPPORT JOURNEY? CALL US AT (605) 376-6780



Olde Towne

DINNER THEATRE

THE BOOK OF MATTHEW (LEIBOWITZ)



Sept 12, 13, 14, 18, 19, 20, 21,
25, 26, 27, 28, Oct 2, 3, 4, 5, 9,
10, 11, 12* 2025

The Savannah Sipping Society



Dec 4, 5, 6, 7, 11, 12, 13, 14,
18, 19, 20, 21 2025 Jan 1, 2,
3, 4, 8, 9, 10, 11* 2026

NOT NOW. DARLING



Feb 27, 28, March 1, 5, 6, 7, 8,
12, 13, 14, 15, 19, 20, 21, 22, 26,
27, 28, 29* 2026

Murdered TO DEATH



May 8, 9, 10, 14, 15, 16, 17, 21,
22, 23, 24, 28, 29, 30, 31,
June 4, 5, 6, 7* 2026

Enjoy the art and joy of community
theatre just minutes south of Sioux
Falls! For more information visit
our website at OTDT.org today!



Commercial Free Hours
All Day, Every Day!



kelofm.com



Directors' Note



Howdy y'all!

Abby and Brittney here, thank you for joining us. We have worked together on several projects before this, but this is our first time putting on a big musical together! This team has been exceptional and created a beautiful family together while showing the strength and determination of women in the workforce.

Abby- I couldn't be more honored to work with this group of extremely talented individuals. None of the magic on stage would have happened without the collaboration of not only the production team but the actors standing before you. I am super passionate about giving women a voice in the theatre and *9 to 5* does just that! As comedic as this story is, it tells the tale of strong women finding their independence and their voice to truly make a change in their lives. I hope this show helps you find the strength to make a positive change in your own life.

Brittney- As a director, the most important thing I've learned is that you hold a living, breathing piece of art in your hands. It's your responsibility to help shape that art into a meaningful story. This cast has built a team that truly cares for one another and for the story they're telling, and I couldn't be more proud of them. As the girls find their voices throughout the show, I implore you: never stop speaking up against those who harm others. Go ahead, laugh at the awkward and uncomfortable moments, but don't forget that there is truth in the reality behind those lived experiences.

As much as we encourage you to stand up to your sexist, egotistical, lying, hypocritical, bigot of a boss, maybe refrain from poisoning and tying him up. So with that sit back, relax, maybe shed a tear or two and definitely giggle a ton.

Brittney Lewis
Abby Schwedhelm

Stage Directors

The Premiere Playhouse

effervescent

VOICE ACADEMY

Bubbly and fun voice lessons near you!

427 N. Minnesota Ave. • Sioux Falls, SD

*eff*myvoice.com

FITBODY BOOT CAMP

Where Your Transformation Begins!

**JOIN NOW AND LOSE YOUR
NEXT 10LBS FAST!**

→
Learn More Here!



START TODAY 605-277-7456

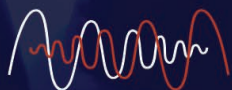
CENTRAL: 3324 S DULUTH AVE. 57105

WEST: 8501 W 26TH ST. 57106

WWW.605FITBODY.COM



When we say **UPTIME**, we mean
**ENJOY THE
SHOW!**



SDN COMMUNICATIONS®

SDN provides fast, reliable and secure broadband internet to businesses across South Dakota over a 50,000-mile fiber network. SDN keeps you connected so you can *enjoy the **UPTIME!***



Cast

Judy Kelsey Baade

Violet Jessica Ashton

Doralee Summer Van Veen

Franklin Hart Bernard Van Moer

Roz Jessica Williams

Joe Nicholas Schnell

Dwayne Clay Ackerman

Dick Casey Kustak

Maria Maddie La Ferr

Missy Mo Plastow

Kathy MacKenzie Braak

Margaret Tiffany Koppes

Bob Enright Jimmy McLain

Tinsworthy Mike Dinsmore

Josh Luke Humke

Featured Players



Hart's Boys Club Austin O'Brien, Mike Dinsmore,
Christian Heiberger, Clinton Store,
Jimmy McLain, Tyler Peters

Roz's Posse Alexis Kulm, Avianna Steen, Kieren
Humke, Liyah White, MacKenzie
Braak, Maddie La Ferr, Mo Plastow,
Tiffany Koppes

Roz's Men Austin O'Brien, Christian Heiberger,
Casey Kustak, Clay Ackerman,
Clinton Store, Jimmy McLain, Luke
Humke, Nicholas Schnell, Mike
Dinsmore, Tyler Peters

**Judy's Joint Girls/
Patrons** Maddie La Ferr, MacKenzie Braak,
Tiffany Koppes, Tyler Peters,
Christian Heiberger, Clinton Store

DD's Rodeo Dancers Alexis Kulm, Austin O'Brien, Avianna
Steen, Kieren Humke, Jimmy
McLain, Liyah White, Luke Humke,
Mo Plastow, Mike Dinsmore

**Violet's Tapping
Girl's Club** Avianna Steen, Austin O'Brien,
Alexis Kulm, Mo Plastow, Kieren
Humke, Luke Humke, Maddie La
Ferr, Tiffany Koppes

Production Team



Paint & Props Coordinator	Abby Kustak
Production Manager	Alex Newcomb Weiland
Co-Director	Abby Schwedhelm
Co-Director, Costume, Hair & Make Up Designer	Brittney Lewis
Production Coordinator, Assistant Stage Manager	Jamie Bowden
Lighting Designer	Corey Shelsta
Sound Designer	Mal Lukomski
Scenic Designer, Technical Director	Jill Clark
Stage Manager	Michelle Smith
Producer, Casting Director	Oliver Mayes
Technical Coordinator & Head Carpetner	Pierce Humke
Co-Choreographers	Magen Richeal Shannon Dancler
Associate Sound Designer	Frances DeArmond

Crew



Deck Crew	Brenda Miller Caty Nordeen Jackson Heiberger Charlie Ellington Audrey Simmons
Mic Wrangler	Bob Nelson
Sound Board Operator	Alex Meemken
Wig Stylist	Anna Crawford
Wardrobe Crew	India Johnson Jackie Bolstad
Light Board Operator	Rosie Contreras
Flyrail Operator	Elizabeth Wintering
Audio Engineer	Violet Morrison
Audio Engineering Apprentice	Frances DeArmond
Build Crew	Cast of 9 to 5

There's No "*Biz*" Like Dough "*Biz*"



2505 S. Minnesota Ave.
Sioux Falls, SD
bagelboysf.com



Enjoy the Show!
Enjoy a Bagel!

thrivent

We are enrolled in
Thrivent Choice®!



Scan the code to learn more about Thrivent Choice and how you can financially support our organization. Anyone can donate using Thrivent's online giving platform,* and eligible Thrivent clients can direct Choice Dollars®.



*Thrivent will pay up to \$300,000 in online processing fees per calendar year for personal donations made through Thrivent's online giving platform. The Thrivent Choice® charitable grant program engages Thrivent clients with membership and Thrivent Member Networks in providing grants that support charitable activities, furthering Thrivent's mission and its purposes under state law. All grant decisions, including grant recipients and amounts, are made at the sole discretion of Thrivent. Directing Choice Dollars® is subject to the program's Terms and Conditions available at thrivent.com/directchoice.

*Protecting your homes and
businesses for over 55 years.*

- | | | |
|--------------|-----------------|--------|
| •Bed Bugs | •Termites | •Rats |
| •Bees | •Mice | •Birds |
| •Cockroaches | •TAP Insulation | •Bats |
| •Fleas | •Chimney Sweep | |

OLSON'S

PEST TECHNICIANS

800-KIL-BUGS • www.800kilbugs.com



Call us for a quick quote!





Downtown Sioux Falls

605-275-5566



HJELLMING

CONSTRUCTION

605-339-0424 info@hjellmingconstruction.com

The New TPP!



Mainstage Series

A program that showcases the highest caliber of community theatre performance, emphasizing refined craft, thoughtful storytelling, and polished production values. This series provides audiences and artists alike with an inspiring standard of quality and creativity, while nurturing a deep appreciation for theatrical tradition and mastery.



Underground Series

A program that explores fresh perspectives and bold theatrical forms. Dedicated to experimentation and forward-thinking, this series serves as a platform for semi-immersive work, unconventional storytelling, and interdisciplinary collaboration — fueling creative risk taking and pushing the boundaries of what community theatre can be.



Artist Development Series

A program that focuses on empowering emerging and lifelong artists through education, mentorship, and experiential learning. Whether on stage or behind the scenes, this series cultivates individual growth and skill-building, ensuring that all participants have the tools and support to thrive as part of a vibrant, welcoming artistic community.

GORDON **FLESCH**

C O M P A N Y.®

Business Technology.
Managed.

800.333.5905 | gflesch.com

Grant Westemeier

gwestemeier@gflesch.com



DOING OUR BEST SINCE 1989

35 Years

zandbroz

209 S Phillips Ave. • Downtown • Sioux Falls

Books • Stationary • Jewelery • Toys • Bodycare • Vintage & More

NATURAL GROCERS
ALWAYS AFFORDABLE PRICES • HIGHEST STANDARDS • ONLY 100% ORGANIC PRODUCE

Natural Grocers® is proud to support
The Premiere Playhouse

Come see us and say 'hello'!

2601 S LOUISE AVE SUITE 300
SIOUX FALLS, SD 57106

ABC RENTALS
Here to Help.

3900 W 12th Street 1002 S Hillside Drive
Sioux Falls, SD 57107 Sioux Falls, SD 57110

WE DON'T JUST WORK...

WE PARTY TOO!

3009 S Phillips Ave
Sioux Falls, SD 57105

ABC RENTALS
Special Events



About The Show

This musical production will play in two acts, with act one running longer than 1 hour and act two running shorter than 1 hour, and a 15 minute intermission between each act.

SYNOPSIS

9 to 5, a Dolly Parton-scored adaptation of the 1980 film, follows three office workers, Violet, Judy, and Doralee, who are fed up with their sexist and misogynistic boss, Franklin Hart Jr. They devise a plan to take control of their workplace and the company, ultimately leading to their empowerment and a transformed office environment.

COURTESY POLICY

- The videotaping or making of electronic or other audio and/or visual recordings of this production and distributing recordings or streams in any medium, including the internet, is strictly prohibited, a violation of the author(s)'s rights, and actionable under United States copyright law.
- Please turn off or silence all electronic devices
- Please make sure that when you parked your car, you paid attention to all posted warnings. If you do not adhere to the posted warnings, your car may be towed at your own expense.
- Enjoy the show and please help spread the news about this production. Share with others on Facebook and Instagram and be sure to tag The Premiere Playhouse!

MERCHANDISE

We have limited edition Premiere Playhouse merchandise available in the lobby! Please stop by our tables for special deals. All items will also be available on our website after the production has ended.

www.thepremiereplayhouse.com/shop

EMPOWERING INDIVIDUAL INVESTORS.

Whether you're a seasoned investor or just starting out, MarketBeat empowers you to make smarter investment decisions.

www.marketbeat.com



Child Care Programs for Ages
Infants to 12 years old

6:30am-6:00pm



HELICOPTER
ROOM - NON-
MOBILE INFANTS



SAILBOAT ROOM



SPEEDBOAT
ROOM



ROCKET SHIP
ROOM



AIRPLANE ROOM



TRYKE ROOM



TRUCK ROOM



PRESCHOOL



FULL + PART-TIME
REGISTERED &
DROP-IN RATES
AVAILABLE

CALL OR VISIT TODAY!

605-274-0404

5000 S MacArthur Lane, Suite 101 Sioux Falls, SD 57108

truks-n-trykes.com/truks-n-trykes-2



VISIT YOUR LOCAL CULVER'S RESTAURANTS:

Culver's of Sioux Falls, SD

2509 S Louise Ave

2800 S Minnesota Ave

770 W Empire Mall

5601 E Arrowhead Pkwy

6301 S Louise Ave

Culver's®

CULVERS.COM

© 2018 Culver Franchising System, LLC. 09/18



Meet The Cast



Alexis Kulm / *Ensemble*

Alexis is excited to return to The Premiere Playhouse after appearing in *Oklahoma!* She's excited to bring the world of *9 to 5* to life with this talented cast and crew. When she's not clocking in at Consolidated, she's answering to her cat Bono, her real boss. When not on stage, Alexis enjoys traveling, playing video games, and trying out new hobbies. She's grateful to her family, friends, and the TPP team for all their encouragement and support.



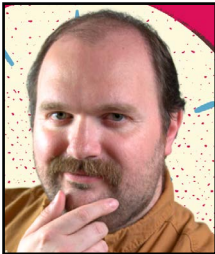
Austin O'Brien / *Ensemble*

Austin is making his TPP debut for *9 to 5* but isn't shy of being onstage. Over the last 10 years he had the pleasure of working for Disney at Walt Disney World and Universal Studios Orlando all the while working as a stage performer across the nation where he's also done costume design, makeup artistry and choreographed several talent winning performance numbers for different pageants. Previously he's been a part of shows in Lincoln Nebraska in *Shrek: The Musical* and *Hairspray* and has even gotten the chance to play in the pit orchestra for *42nd Street* and before moving to South Dakota had the pleasure to be on standby for a pit orchestra spot in *Lempicka* while it was at The La Jolla Playhouse. He's so excited to be able to get back into the musical theater scene onstage and is even more thankful to his family and friends for coming out to support his debut!



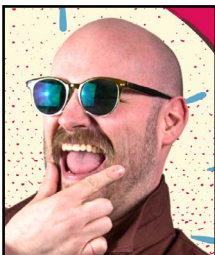
Avianna Steen / *Ensemble*

Avianna is clocking in for *9 to 5*! Before she came to work at Consolidated, she recently was singing in the hills and twirling with a telegram delivery boy in The Goodnight Theatre Collective's *The Sound of Music* as Liesl von Trapp, capturing the sweetness of being sixteen and full of hope. Her other recent credits include the hilarious Jasmine Merriwether in *The Staggering Heartbreak of Jasmine Merriwether*, Caroler/Young Fanny/Dora Fezziwig/Mabel in *A Christmas Carol*, and her most notable performance at TPP, the fierce Savannah in *Freaky Friday*—proving that brains and attitude are a powerful (and intimidating) combo. Her family and friends seriously deserve a Tony award for their endless love and support throughout her theatre journey so far.



Ben Van Moer / *Franklin Hart*

Ben is making his acting debut with The Premiere Playhouse as Franklin Hart Jr.—though he promises he's much nicer in real life! He previously music directed *Freaky Friday* and *The Wizard of Oz Jr.* with the Penguin Project. Ben has performed with The Good Night Theater Collective in *Spelling Bee*, *Little Women*, and *You're a Good Man, Charlie Brown*, among others. He is the 6-12 Vocal Music Director and Head Theater Director for the Tri-Valley School District.



Casey Kustak / *Dick*

The first time a program has ever referenced Casey's personality. Casey has had a productive year appearing in 6 different versions of Japanese Game shows, where he split 2 prizes with some rando from Alabama. You may have seen Casey in the ESPN 30 for 30 *The Last Dance* documentary, a commercial for reusable toilet paper, and most recently in the new Netflix series *Unparalleled: The rise and fall of Americas Love for Lawn Sprinklers*. You are not reading this, who cares. Shit. See, no one reads these things. I love my wife, Abby and my kids, B and P. Steve, you've always been the worst.

Meet The Cast



Christian Heiberger / Ensemble

Christian is thrilled to return to the Orpheum stage for his 24th show since joining the theatre community in 2019. When not performing, he enjoys working events with Simply Ever After Entertainment, obsessing over anything D&D related, playing video games, chess or Magic, climbing at Falls Park and baking cookies for everyone. Special thanks to Jackson, Lindsay, and all the Cratchits (and honorary Cratchits) for all the love and support you all provide. Cratchits forever!



Clay Ackerman / Dwayne

Clay is excited to be back with TPP as both Music Director and Dwayne in this heartfelt comedy. He also can't believe his luck that he gets to play romantic opposite to the talented, funny, and sexy Summer! His past TPP credits include *HAIR* (M.D./Lead Guitar), *Cinderella* (M.D./Jean-Michel), and *Beauty and the Beast* (M.D./Gaston). Clay would like to thank his family and friends for their support and encouragement, particularly his wonderful parents and loving partner.



Clinton Store / Ensemble

Ladies and Gentlemen, fasten your seatbelts. Click it or ticket, because Clinton makes his return to The Premiere Playhouse Stage once again. You may recognize Clinton in other performances such as *Grease*, *Cinderella*, and *The Little Mermaid*. Recently nominated for a Stage Award for his role in Goodnight Theatre Collective's production of *Night of the Living Dead a Radio Play*. In his spare time, Clinton enjoys gardening, petting bunnies, walking dogs, throwing ice cream cones at children as they pass his house, and on occasion opening other people's mail. Clinton dedicates this show to his loved ones, friends and family. Thank you for coming and enjoy the show.



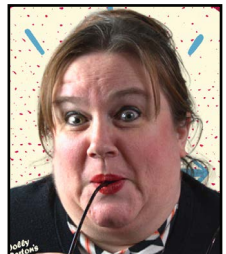
Jessica Ashton / Violet

Jessica is thrilled to make her TPP debut! She recently played Audrey in *Little Shop of Horrors* at OTDT. Favorite past musical roles include the title character in *Cinderella*, Sarah in *Guys and Dolls*, Narrator in *Joseph*, and Ginger in *Gilligan's Island*. She regularly performs with Sioux Falls Dinner Detective. Offstage, Jessica is an HR consultant who loves adventuring with her family. She's grateful for their ongoing support & reminds us: kindness is the purest currency—spread joy!



Jessica Williams / Roz

Jessica is overjoyed to be making her Sioux Falls theatrical debut with TPP! She holds a BA in Musical Theatre from Columbia College Chicago and an MA in Arts Administration from the University of Kentucky. Some of Jessica's notable stage credits include Diana (*Next to Normal*), Mrs. Walker (*Tommy*), Berthe (*Pippin*), Patsy (*Always...Patsy Cline*), Miss Hannigan (*Annie*), and the Historian/Diva (*Spamalot*). She would like to thank her family for their unfaltering love and encouragement. "The arts make a bridge across this world in ways that nothing else can." – Julie Andrews



In Memoriam

Theamarie Hagemann

1968-2024

Thea loved the theatre, the experiences on stage and off; the fun of playing.

She was a beautiful light.





Many Locally Owned Businesses Use



As Their Primary Marketing Partner

“Advertising Works When You Have
The RIGHT STRATEGY, The RIGHT
TACTICS and The RIGHT CREATIVE!”

Scan The QR Code to
Watch These Testimonials



SCAN HERE



Meet The Cast



Jimmy McLain / *Bob Enright*

Jimmy is pumped to be in the Boys Club, huh! Recently, he played Puff in The Premiere Premiere's play *Battle Cry*. Other credits include *The Sound of Music* with Goodnight Theatre Collective, and the TPP shows *HAIR*, *Comfortably Single*, *A Christmas Carol*, and *The Little Mermaid*. Jimmy is not one to sit still, reprising his role as Brad in the Rocky Horror Shadow Cast on June 28 at the State Theater. He would like to thank his wonderful family and all the friends he's made in this community!



Kelsey Baade / *Judy*

Kelsey is so excited to be back for her second show at TPP! Being in *HAIR* last summer rekindled her love for theater and performance and she's incredibly thankful to be involved once again. Kelsey would like to give a HUGE thank you to her husband and family for making this work in their busy lives and would also like to thank the wonderful and encouraging cast, crew and directors! Please enjoy the show!



Kieren Humke / *Ensemble*

Kieren is clocked in for another show with TPP! You may recognize her from Sioux Falls' past productions of *Mamma Mia!*, *The Flick*, *Freaky Friday*, or seen her choreography in local children's and high school musicals. After traveling in the culturally diverse Up with People, she now supports the children of LifeScape and is always ready to care for those she loves. "Thank you to my family and friends for all the love and support over the years!!"



Liyah White / *Ensemble*

After time away from the spotlight, Liyah White is thrilled to return to the stage in *9 to 5!* The lifelong performer, Liyah White brings energy, heart, and a love of storytelling to every role. This production marks an exciting new chapter, and she couldn't be more grateful to share it with this incredible cast and audience. Thank you for supporting live theatre—let's clock in and have some fun!



Luke Humke / *Josh*

Luke is happy to be returning with TPP as a member of the Dance Ensemble and Josh in *9 to 5!* You may have seen him recently in other TPP productions like *Midsummer Night's Dream*, *Freaky Friday*, and *HAIR*. He is ecstatic to be a part of TPP and can't wait to continue seeing the amazing changes happening for next season. Luke would love to shout out his family for their monumental and unflinching support in his life.

Meet The Cast



MacKenzie Braak / Kathy

Mackenzie is excited to be back on the TPP stage as the resident office gossip, Kathy. You may have seen her previously as Sally/Caroler in TPP's *A Christmas Carol*. When she's not on stage she plays the role of grad student studying behavioral analysis and a behavioral technician. She would like to thank her family and friends for encouraging her to continue pursuing her love of theater. Thanks for coming and enjoy the glimpse into life at Consolidated.



Maddie La Ferr / Maria

Maddie (she/her) is thrilled to be making her TPP debut. Originally from California, she holds a B.A. in Theatre Performance from Wagner College. Maddie has performed in cabarets across New York City and worked behind the scenes as a personal assistant on Broadway. In her spare time, she enjoys writing music, playing guitar with Uncle Mingo, hiking, and spending time with friends and family—both near and far. She is incredibly thankful for everyone supporting TPP and encourages continued donations to local school district theatre programs to help keep arts education alive. Maddie is deeply grateful to her partner, her family in California, her mentor John Krause, the Titze family, and her chosen family in South Dakota. Their love and support have been instrumental in shaping the person she is today.



Mike Dinsmore / Tinsworthy

Mike is delighted to return to the stage for his second performance at the TPP, in the role of Consolidated CEO, Russell Tinsworthy, in this musical comedy classic. Shoutout to family, friends and my very talented fellow cast-mates and crew for all their support and encouragement. Enjoy the show!



Mo Plastow / Missy

Mo wants to thank YOU for coming to 9 to 5! She leads an exciting life as the Teaching Team Lead at The Effervescent Voice Academy and teaches voice lessons at the University of South Dakota. She performs with Simply Ever After Entertainment, being a real-life princess! Whenever she can find a MOMent of free-time, she likes to have a glass of wine or tea, read a book, or spend time with her loved ones.



Nicholas Schnell / Joe

Nicholas is new to TPP and the Sioux Falls theatre scene overall! During his time in Iowa, he took on many different roles including Joseph in *Joseph and the Amazing Technicolor Dreamcoat*, Jack in *Into the Woods*, and Bert in *Mary Poppins*. He gives huge thanks to his Iowa theatre friends and his mom! Nicholas is beyond excited to work with such a talented, friendly cast and hopes the audience loves the show!





Meet The Cast



Summer Van Veen / *Doralee*

Summer is thrilled to be clocking in as Doralee on stage at The Premiere Playhouse! Her previous credits include *Mamma Mia!*, *Beauty and the Beast*, *Cinderella*, and *HAIR*. She'd like to thank this amazing cast and production team for all their positivity and hard work on this show. She'd also like to thank her friends, family and especially Clay, for all their love, support and encouragement. Now it's time to clock out, relax and enjoy the show!



Tiffany Koppes / *Margaret*

Tiffany is honored to be a part of this amazing show and share the stage with such a talented cast. Some previous credits include TPP productions *The Little Mermaid*, *Grease*, and previously SECT productions *Rock of Ages* and *Mary Poppins*. Tiffany would like to say a special thank you to her husband and kids for their patience and support!

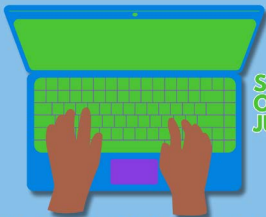


Tyler Peters / *Ensemble*

Tyler is excited to be back for his second TPP performance, with his first performance being as Berger in *HAIR*. Tyler's other credits include, Quasimodo in *The Hunchback of Notre Dame*, Lucifer in *Angels and Demons: Cycle Plays*, Sonny in *Grease* and many other amazing roles. Tyler is thrilled to be apart of such an amazingly talented cast/team!



FESTIVAL OF NEW WORKS



SUBMISSIONS
OPEN THROUGH
JULY 30TH

OCTOBER 25-26, 2025



THE PREMIERE PREMIERES



SUBMISSIONS
OPEN THROUGH
JULY 30TH

FEBRUARY 20-22, 2026

VOYAGE
FEDERAL CREDIT UNION

Empowering You on Your Financial Journey



voyagefcu.org

Insured by NCUA



*Sioux Falls Hair and Nail
Specialist Salon + Art Gallery*

218 W. 13th St. #101
hifihairstf.com | 605-496-9957

Furniture MART

Home.
Tailored to you.

2 SIOUX FALLS LOCATIONS

140 East Hinks Lane
2101 West 41st Street



YOUR *Best* HEALTH
STARTS WITH PRIMARY CARE



Find a convenient location near you.

SANFORD
HEALTH

Let's turn your home into **entertainment central.**

From streaming your favorite shows, movies and music to gotta-have-it extras like HBO® and TiVo® DVRs, Midco® makes it easy to live it up. And when you add home security and automation, you'll have your entire house in the palm of your hand.

Are you ready to Midco? Let's go!



MIDCO®

1.800.888.1300 | Midco.com

Services may not be available in all areas, and some restrictions apply. Visit Midco.com/Shop to check serviceability.
© 2019 Midcontinent Communications. All Rights Reserved.

Production Team



Corey Shelsta / *Lighting Designer*

Corey Shelsta is a Designer and Professor of Theatre at South Dakota State University. Recent credits: Lighting Design: *Oklahoma* – Prairie Repertory Theatre; *A Christmas Carol*, *HAIR*, *Oklahoma*, *Grease* – Premiere Playhouse. Scenic Design: *Macbeth*, *Bright Star* – State University Theatre; *Two Across*, *And Then There Were None* – Prairie Repertory Theatre; *Oklahoma!* – Premiere Playhouse; *Romeo & Juliet* – SD Shakespeare Festival. Corey would like to thank his wife Stacy for all her love and support as they celebrate their 30th anniversary this summer.

Magen Richeal / *Choreographer*

Magen is excited to be part of the creative team for 9 to 5! Past choreography credits include TPP's productions of *HAIR*, *Grease*, and *Cabaret*.

Michelle Smith / *Stage Manager*

Michelle is happy to be back calling another show with TPP! She received her undergraduate degree from San Francisco State and stage managed in the bay area for a number of years. Michelle is also a new mom to a baby girl born in April. Enjoy the show!

Oliver Mayes / *Producer & Casting Director*

Oliver Mayes is a performing arts professional with lifelong dedication to musical theatre. He holds a B.F.A. in Music Theatre from AMDA College of the Performing Arts where he later recruited and advised performing arts students globally, and an M.F.A. in Theatre Directing from USD, where he also taught, directed and choreographed for the Department of Theatre. A Kennedy Center directing scholar and 2020 SDC Fellow, Oliver is an associate member of SDC, the national union for professional directors and choreographers. His work has spanned the U.S., and his directing credits at The Premiere Playhouse include *Cabaret*, *Grease*, *HAIR*, and *Freaky Friday*.

Shannon Dancler / *Choreographer*

Shannon (she/her) is thrilled to have her choreo return to the TPP stage. Her choreography was last seen at Tea Area HS in *The Addams Family*. Shannon is excited to continue putting her knowledge from Broadway Dance Center's Professional Semester to use and to further explore being a choreographer. She would love to thank her friends, family, and partner for continually supporting her dreams and crazy schedule that comes with them. IG @shan_dann.

Special Thanks!



Josh Baade, Layne McIntyre, Scott Mollman, Carter Newcomb Weiland, Johnny Monroe, Maddie Lukomski, Matt Sumner, Jesse Jensen, Noah Smith, Christian Heiberger, Shawn Shannon II, Casey Kustak, Norberg Paint, University of South Dakota's Department of Theatre, South Dakota State University's School of Performing Arts, Sweet Adelines, Patrick Simonsen, Estate of Connie Schnaible, Bagel Boy on Minnesota Ave, Nicholas Blau



The Premiere Playhouse Team

Executive Artistic Director Oliver Mayes

Production & Education Manager Alex Newcomb
Weiland

Facilities & Scene Shop Foreman Pierce Humke

Administrative Finance Supervisor Amber Sumner

Production & Education Coordinator Abby Kustak

**Costume Shop Manager &
Development Associate** Brittney Lewis

Scenic & Technical Supervisor Jill Clark

Web & Media Developer Chris Berke



Board of Directors

President Tammi Waltjer-Haverly

Vice President of Governance Thomas Kapusta

Vice President of Operations Scott Ostman

Treasurer Sarah Tuntland

Secretary Kelly Boyd

Directors Clinton Store
Lary B. Etten
Mary McClung
Kent Hartsuiker
Pedro Assis
Casey Kustak

Past President Rick Weiland

THE PREMIERE PLAYHOUSE PRESENTS THEATRE CAMPS!

THE PREMIERE PLAYHOUSE PRESENTS

EDUCATION

Disney
101 Dalmatians
© Disney KIDS

July 14 - 26/27, 2025

(Ages 6-10)

THE PREMIERE PLAYHOUSE PRESENTS

EDUCATION

SOMETHING
ROTTEN!
JR.

July 21 - August 2, 2025

(Ages 11-14)

THE PREMIERE PLAYHOUSE PRESENTS

EDUCATION

mti's
BROADWAY
JUNIOR
revue
raise your voice

July 28 - August 9, 2025

(Ages 14 - 18)

THE PREMIERE PLAYHOUSE PRESENTS

EDUCATION

Disney
**HIGH
SCHOOL
MUSICAL**
JR.

May 4 - August 17, 2025

(All abilities, ages 10 - 25)

REGISTER TODAY!

Registration information on our summer
education programs can be found on
www.thepremiereplayhouse.com.





THE PREMIERE PLAYHOUSE

Educational Community Theatre in Downtown Sioux Falls

SEASON 23



THE PREMIERE
PLAYHOUSE



ORPHEUM

MAINSTAGE THEATER CENTER



July 25 - 26/27, 2025

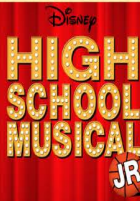


August 1 - 2, 2025

mti's
BROADWAY
JUNIOR[®]
revue

raise your voice

August 8 - 9, 2025



August 15 - 17, 2025

NOISES OFF!



OCTOBER 3-5, 2025

HAIRSPRAY



APRIL 17-26, 2026

LEGALLY
BLONDE



JUNE 12-21, 2026



THE PREMIERE
PLAYHOUSE

UNDERGROUND

ICON

AMERICAN
IDIOT

BASED ON THE
CONCEPT ALBUM
BY GREEN DAY

NOVEMBER 21-23, 2025

PASSION
PROJECT



SUBMISSIONS
OPEN THROUGH
JUNE 24TH

JANUARY 23-25, 2026

HEAD
OVER
HEELS



MARCH 13-15, 2026

DEATH
OF A
SALESMAN



FROM THE
CATALOG OF
THE GO-GO'S

MAY 15-17, 2026

thepremiereplayhouse.com/productions-events