

THE PREMIERE PLAYHOUSE  
PRESENTS



**GREASE**<sup>®</sup>

**JUNE 15-25, 2023**



ORPHEUM  
THEATER CENTER

[www.thepremiereplayhouse.com](http://www.thepremiereplayhouse.com)



605.336.3718



@KOCHHAZARD



FACEBOOK.COM/KOCHHAZARCS

SCAN ME



June 15 - 25, 2023



Presents

## GREASE

Book, Music, and Lyrics by Jim Jacobs and Warren Casey

Stage Director  
**Oliver Mayes**

Choreographer  
**Magen Richeal**

Stage Manager  
**Erika Waxdahl**

Sound Designer  
**Malia Lukomski**

Scenic Designer  
**Victor E. Shonk**

Lighting Designer  
**Corey Shelsta**

Costume, Hair & Makeup Designer  
**Brittney Lewis**

Music Director  
**Matthew Walicke**

## RIGHTS

"Grease" is presented by special arrangement with Samuel French, Inc.,  
a Concord Theatricals Company. | [www.concordtheatricals.com](http://www.concordtheatricals.com)  
Not for broadcast transmission | All rights reserved | DO NOT DUPLICATE

"Hopelessly Devoted To You"

Written by John Farrar

©1978 Unichappell Music Inc. (BMI), Ensign Music Corporation (BMI) and John Farrar Music (BMI)

"You're The One That I Want"

Written by John Farrar

©1978 Unichappell Music Inc. (BMI), Ensign Music Corporation (BMI) and John Farrar Music (BMI)

"Sandy"

Written by Scott Simon & Louis St. Louis

©1978 Ensign Music Corporation

All Rights Administered By Unichappell Music Inc. All Rights Reserved. Used By Permission.

## WARNINGS

Please be aware that this production contains the use of adult language/content,  
fog/haze, herbal cigarette smoke, and flashing lights.

## DIGITAL COPY OF PROGRAM





# Professional Movers

- at -  
Do-it-yourself  
Prices...

605.361.9363

Ask About Our  
Storage Options Too!

## Custom print and marketing solutions for your business.

From marketing materials to signage, and everything in between, the experts at AlphaGraphics can help your brand get noticed and get business.

alphagraphics

605.334.7333

www.us451.alphagraphics.com



PRINT



MARKETING



SIGNS



TECHNOLOGY



## Donor's Spotlight



# THANK YOU TO FIRST PREMIER

The Premiere Playhouse would like to take this opportunity to express our heartfelt appreciation to First Premier - Our sponsor for Seasons 19, 20, 21, and 22!



**First PREMIER Bank**  
Member FDIC  
**PREMIER Bankcard**



# Friends of The Premiere Playhouse

## **EXECUTIVE PRODUCER** (\$10,000+)

---

<b>Sanford, T. Denny</b>	<b>First National Bank</b>
<b>First PREMIER Bank</b>	<b>Kirby, Dan &amp; Arlene</b>
<b>The Wanda Covington Endowment Foundation</b>	<b>Sanford Health</b>
<b>Giving Hope Inc</b>	<b>Sioux Falls Area Community Foundation</b>
<b>Beacom, Miles &amp; Lisa</b>	<b>Culver's</b>
<b>MLAEA Charitable Fund of the SFAFC</b>	<b>Gannett Foundation</b>
<b>Dr. Kirke &amp; Dorothy Wheeler Foundation</b>	<b>Cimarron Label</b>
	<b>Knudson, De &amp; Dave</b>

## **PRODUCER** (\$5,000+)

---

<b>SDN Communications</b>	<b>Sandhills Global Inc.</b>
---------------------------	------------------------------

## **SPONSOR** (\$1,000+)

---

AARP South Dakota  
 Bigelow, Charles and Kari  
 CNA Surety  
 Cole, Kevin  
 Cowan, Randy & Ann  
 Haverly, Tammi  
 Jennings, Sarah  
 Joyce DeGroot Community Theater Endowment of the SFACF  
 Kniep, Bekki  
 Lloyd Properties  
 Nelson, Bob  
 Norman and Melanie Bliss Family Fund of the SFACF  
 Showplace Cabinetry  
 South Dakota Arts Council  
 Virginia Harrington Charitable Fund of the SFACF  
 Wellmark



# Friends of The Premiere Playhouse

## **LEAD ROLE** (\$500+)

---

Kelly Boyd, Rick Gourley, Mark & Nancy Hallenbeck, Miller Funeral Home, Modern Woodmen, Janice Nicolay, Elaine Sestak, Transource Truck & Equipment Inc.

## **SPOTLIGHT** (\$100+)

---

Carrie Aaron, KB Bankowski, Sophie Beers, Susan Bentz, Christopher Bouwman, Deborah Bowen, Katelyn Boyd, Scott Brady, Larry Caldwell, Ronald & Kay Christensen, Linda Coombs, Kevin Dick, Carol Flynn, Gail Fuller, Kyle & Jenny Goldammer, Doug Herron, Ezra Hunter, Jesse Jensen, Thomas Kapusta, Dick & Cindy Koch, Koch Hazard, Kimberly & Robert Kontz, Bill & Joyce Kubat, Ginny Laferriere, Jennifer Larsen, Bruce Mair, Scot Mannschreck, Sue Martens, Bonnie Martin, Oliver Mayes, Gene & Susan McGowan, Elliot Moore, Emily Moore, Todd Nelson, Erika & Reynold Nesiba, Scott Ostman, Piper Sandler Foundation, Otis & Naa Priestler, Promising Futures Fund, Matthew Salerno, John & Pat Schlimgen, Red & Irene Shannon, Sioux Empire Federal Credit Union, Stacie Soderstrom, Todd Spomer, Dawn Stephens, Clinton Store, Amber & Matthew Sumner, Mark Swanson, Sarah Tuntland, Steve Veenhof, Jessica Weber, Donald Weiland, Richard Weiland, Mandie Weinandt, Bob Wendland, Stuart E. Wenzel, Kenna Wiczorek

## **SUPPORTING CAST** (\$1+)

---

Megan Albers, Heather Allmindinger, Vicki Bailey, Liz Bergstrom, Jason Bittner, Gail Blocker, Donna Bofenkamp, Julie Clark, Carlos Comay, William Daugherty, Carissa Dice, Brandi Diedrich, Tony Durr, Marsha Englert, Sheryl Faber, Augustine Fernandez, Brian Griebel, Karen Groeneveld, Carole Hamerin, Carol Holstad, Susan Hovey, Kelly Irvine, Sarah Johansen, Debbi Jones, Kathleen Kersey, Craig Kuca-Lenhart, Dale Larson, Valerie Loudenback, Maddie Lukomski, Colleen Maguire, Christiane Maroun Sulaiman, Bonnie Martin, Shelli Masek, Maggie Mayes, Sharon Meile, June Mikkelson, Sean Mueller, Jacquelyn Muhs, Chris Nelson, Lanney & Bonnie Nelson, Matt Nesmith, Terry Nielsen, John Nichols, Alexandria Nissen, Alex Newcomb Weiland, Kimberly Paulson, Christy Pearson, Nicole Plesec, Ruthie Pottratz-Anderson, Terry & Susan Prendergast, Mike Richards, James Roberts, Teresa Schulte, Dylan Slate, Kjerstin Smith, Rachel Smith, Nathan Sparks, Vicki Stewart, Todd & Shari Sumner, Quinn Swenson, Dorothy Valland, Daniel Vine, Tanya Wenzel, Katie Wilson, Shannon Wright

*Sponsor a show today at [thepremiereplayhouse.com/sponsorships/](http://thepremiereplayhouse.com/sponsorships/)!*



# THE PREMIERE PLAYHOUSE

*would like to take this opportunity to  
express our extreme gratitude to*

## DE & DAVE KNUDSON

*for sponsoring our production of*



Welcome to The Premiere Playhouse's 2023 production of *Grease*! Staying on trend with the previous presentations of our 20th anniversary season, our company has worked diligently to give Sioux Falls a production of *Grease* that feels simultaneously nostalgic and new. The results have been thrilling to see and I look forward to you all experiencing the joy of musical theatre that is in store for today's performance.

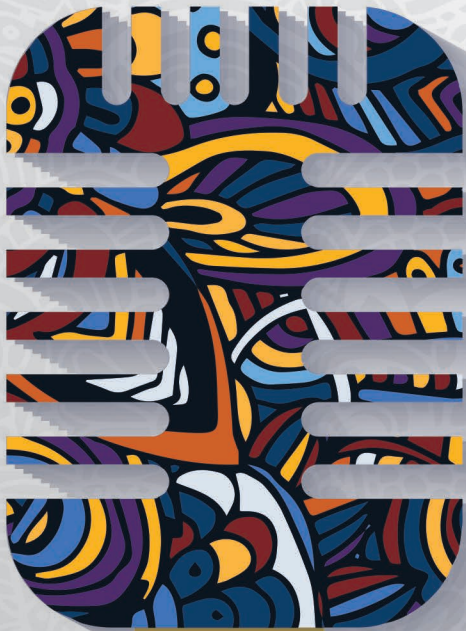
I would like to extend a heartfelt thank you to our sponsors for this production, De and Dave Knudson, at the Executive Producer level, as well as our season sponsor, First Premier Bank for their generous support. I would also like to thank South Dakota State University's School of Performing Arts and Lake Area Technical College's automotive program who were our key partners in bringing the "Greased Lightning" car to life. Without the philanthropy of individuals and corporations such as De, Dave, First Premier, SDSU, Lake Area, and our other partners, we would not be able to successfully bring community-based theatre and education to Sioux Falls.

If you are positively impacted by your experience with us and want to help our non-profit organization continue to bring your community quality, thought provoking entertainment, I encourage you to make a donation and/or subscribe to our recently announced 21st season full of exciting, ground-breaking theatrical history landmarks! Your patronage of our organization is greatly appreciated.

Thank you for supporting local theatre,

**Oliver Mayes**

*Managing Artistic Director*



# BRAVO

a standing ovation  
from Sanford Health

Sanford Health proudly  
supports the Sioux Empire  
Community Theater and its  
dedication to the arts.

**SANFORD**  
HEALTH

## Director's Note



Many of us can relate to the concept of performing a musical number (or album) as the ultimate pop/rockstar in our adolescent bedrooms with a hairbrush, envisioning all the surrounding production value that failed to exist in reality. Or was that just me? Well, our production of *Grease* embodies that idea of each individual having the capability to be a rockstar in their own right, when they choose to embrace the liberation that the music and culture of rock n' roll brought to the 1950's and still brings us all to this day.

Throughout this story each of the major characters have conflicts and celebrations, with Sandy's core challenge being – aside from the typical “boy problems” – her pending choice between following the unattainable likes of false idols like Sandra Dee or surrendering to the liberation of a music, culture and friend group that brings her authentic joy. This conflict became a guiding light in our approach for this production. Our *Grease* takes place in Chicago, Illinois of 1958–1959, the true inspiration for Jim Jacobs and Warren Casey's dynamic choices in this stage play. Our cast and team worked together to bring the authenticity of various Chicagoan identities and social classes cleverly depicted in the text while allowing the toe-tapping musical performances to become as vivid as one's imagination.

Thank you to each individual who helped make this production a success. Countless hours of work from several passionate and talented people made this all possible, and I'm truly grateful. I dedicate this production to my late grandmother, Donna, who was always one of the biggest supporters of my artistic endeavors. A firm believer in “do what you love” and the positive cultural impact of the arts, she was thrilled to hear of my new job at TPP and our 20th anniversary season – particularly *Grease*. I know she would have loved our musically liberating and inclusive take on the show, which has remained a driving force for my work on this production.

**Oliver Mayes**  
*Stage Director*



# About The Show

## MUSICAL NUMBERS

15 Minute Intermission

### Act 1

#### *Grease*

T-Birds, Pink Ladies, Miss Lynch, Eugene, Patty, Ensemble

#### *Summer Nights*

Danny, Sandy, T-Birds, Pink Ladies, Ensemble

#### *Those Magic Changes*

Doody, T-Birds, Pink Ladies, Ensemble

#### *Freddy, My Love*

Marty, Jan, Frenchy, Rizzo

#### *Greased Lightnin'*

Kenickie, T-Birds, Ensemble

#### *Rydell Fight Song*

Sandy, Patty, Cheerleaders

#### *Mooning*

Roger & Jan

#### *Look at Me, I'm Sandra Dee*

Rizzo

#### *We Go Together*

T-Birds & Pink Ladies

### Act 2

#### *Shakin' at the High School Hop*

Full Company

#### *It's Raining on Prom Night*

Radio Voice, Sandy, Frenchy

#### *Born to Hand-Jive*

Johnny Casino, Full Company

#### *Hopelessly Devoted to You*

Sandy

#### *Beauty School Dropout*

Teen Angel, Frenchy, Female Characters

#### *Beauty School Dropout (Reprise)*

Teen Angel, Frenchy, Female Characters

#### *Sandy*

Danny

#### *Rock n' Roll Party Queen*

Doody & Roger

#### *There Are Worse Things I Could Do*

Rizzo

#### *Look at Me, I'm Sandra Dee (Reprise)*

Sandy

#### *You're the One That I Want*

Sandy, Danny, Full Company

#### *Finale*

Full Company

## COURTESY POLICY

• THE VIDEOTAPING OR MAKING OF ELECTRONIC OR OTHER AUDIO AND/OR VISUAL RECORDINGS OF THIS PRODUCTION AND DISTRIBUTING RECORDINGS OR STREAMS IN ANY MEDIUM, INCLUDING THE INTERNET, IS STRICTLY PROHIBITED. A VIOLATION OF THE AUTHOR(S)'S RIGHTS AND ACTIONABLE UNDER UNITED STATES COPYRIGHT LAW. FOR MORE INFORMATION, PLEASE VISIT: <https://concordtheatricals.com/resources/protecting-artists>

- Please turn off or silence all electronic devices.
- Please make sure that when you parked your car, you paid attention to all posted warnings. If you do not adhere to the posted warnings, your car may be towed at your own expense.
- Enjoy the show and please help spread the news about this production. Share with others on Facebook and Instagram and be sure to tag @thepremiereplayhouse!

## MERCHANDISE

We have limited edition Premiere Playhouse merchandise available in the lobby! Please stop by our tables for special deals. All items will also be available on our website after the production has ended.

[www.thepremiereplayhouse.com/shop](http://www.thepremiereplayhouse.com/shop)



# First National Wealth Management

Located at The First National Bank in Sioux Falls®

# A LEGACY OF SUCCESS.

As part of a bank with a 135-year history, we know a thing or two about success. We know what it's like to work hard for what you have and the importance of protecting what you've built. Contact us for a better wealth management experience at [wealth@fnbsf.com](mailto:wealth@fnbsf.com).



100 South Phillips Avenue • (605) 335-5180 • [fnbsf.com](http://fnbsf.com)



## Cast

### ***Pink Ladies***

**Sandy** Madison Gerhart

**Rizzo** Stacie Soderstrom

**Frenchy** Bekki Kniep

**Marty** Ebony Shanklin

**Jan, Co-Dance Captain** Casey Schultz

### ***T-Birds***

**Danny** Ted Van Alstyne

**Kenickie** Clinton Store

**Doody** Connor Klimek

**Roger** Barry Longden

**Sonny/Fight Captain** Kevin Wintering

### ***Students & Adults***

**Eugene/Teen Angel** Patrick Simonsen

**Patty Simcox** Kianna Thelen

**Miss Lynch** Valerie Arens

**Johnny Casino** Christian Heiberger

**Cha-Cha** Berkley Fierro

**Vince Fontaine** Mo Hurley



## Cast

### ***Rydell High Ensemble***

Christian Heiberger, Berkley Fierro, Mo Hurley, Jackson Heiberger, Tiffany Koppes (Co-Dance Captain), Abby Schwedhelm, Audrey Simmons (Radio Voice), Josiah Southall, Brooke Lynn Tollefson

### ***Understudies***

**Pink Lady Swings:** Abby Schwedhelm (Sandy/Frenchy), Audrey Simmons (Rizzo/Jan/Marty) **T-Bird Swings:** Christian Heiberger (Danny/Kenickie/Sonny), Kevin Wintering (Roger), Josiah Southall (Doody) **Ensemble Swings:** Jackson Heiberger (Eugene/Teen Angel/Johnny), Tiffany Koppes (Miss Lynch/Cha-Cha), Brooke Lynn Tollefson (Patty Simcox/Vince) **Off-stage Ensemble Swing:** Jamie Bowden



## Band

**Piano/Conductor** Matthew Walicke

**Guitar 1** Sean Albertson

**Guitar 2** John Effinger

**Bass Guitar** Brian Masek

**Drums** Gene LeVasseur

**Saxophone** Pearl Wigg





# Production Team

<b>Production Manager</b>	Alex Newcomb Weiland
<b>Charge Scenic Artist</b>	Alexondrea Thong Vanh
<b>Costume, Hair, &amp; Makeup Designer, Costume Shop Manager</b>	Brittney Lewis
<b>Assistant Stage Director</b>	Casey Kustak
<b>Lighting Designer</b>	Corey Shelsta
<b>Assistant Stage Manager</b>	Elizabeth Wintering
<b>Stage Manager</b>	Erika Waxdahl
<b>Properties Artisan</b>	Jake Cox
<b>Production Assistant</b>	Jamie Bowden
<b>Associate Charge Scenic Artist</b>	Jill Clark
<b>Choreographer</b>	Magen Richeal
<b>Sound Designer &amp; Assistant Lighting Designer</b>	Malia Lukomski
<b>Music Director</b>	Matthew Walicke
<b>Stage Director</b>	Oliver Mayes
<b>Technical Director</b>	Pierce Humke
<b>Costume Shop Assistant</b>	Sara Margaret Maifeld
<b>Scenic Designer</b>	Victor E. Shonk





# Crew

- Sound Board Operator** Emily Piper
- Light Board Operator** Rosie Contreras
- Sound Engineer** Scott Spexarth
- Props Crew** Kyle Olsen
- Deck Crew** Alli Goeller
- Wardrobe Crew** Lyn Mock  
Rex Williams
- Build Crew** Kyle Olsen  
Abby, Beckett, & Penny  
Kustak  
Todd Nelson  
Dan Zerfas  
Sam Mettler  
Doug Smith  
Rex Williams  
Carlie Terrall  
Allegra Sekely  
Ellie Roskamp  
Garrett Thompson



## Lori Bly

Broker Associate, SRS  
Realtors for Kids Board Member



*Bug Me Anytime!*

Call: 605-521-9077



**Dr. Devren Anderson**  
**Dr. Maria Yeash**  
**Dr. Nan Bates**

6104 S Lyncrest Ave  
Sioux Falls, SD 57108

**605.274.6191**

[www.1DentalWellness.com](http://www.1DentalWellness.com)



Melissa Baker,  
M.A., CCC-A, FAAA

Elizabeth "Libby" Benson,  
Au.D., CCC-A, FAAA

*Hear what you've been missing.*  
We are an advanced hearing practice that specializes in  
diagnosis, treatment, and prevention of hearing loss  
*for all ages.*



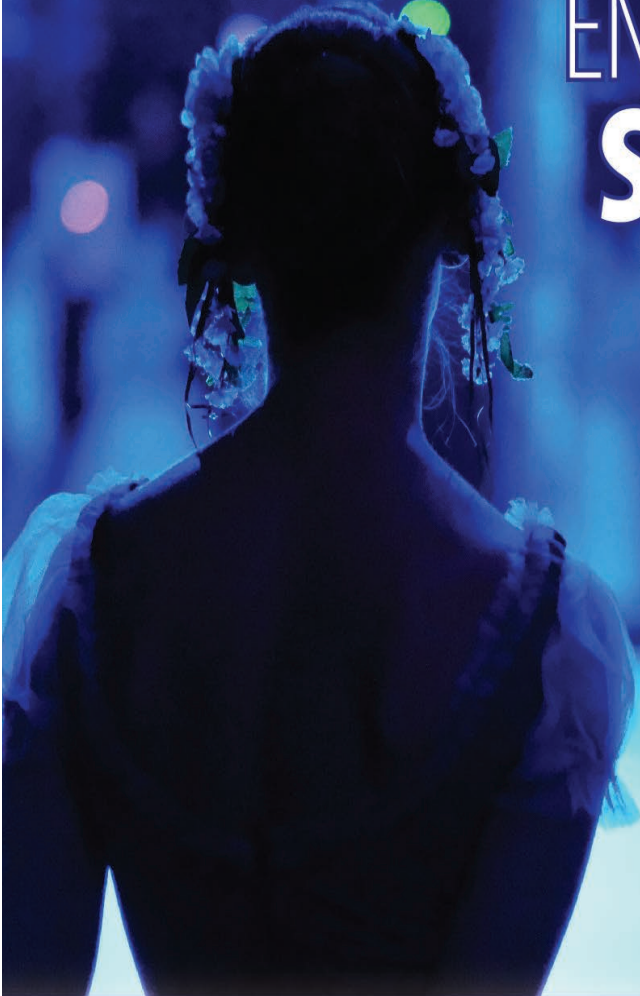
605.610.2886 • [siouxfallshearing.com](http://siouxfallshearing.com)



Hours: Mon-Thurs 9am-5pm • Fri 9am-12pm  
429 W 69th St • Sioux Falls, SD  
(Southwest Corner of 69th St. and Minnesota Ave.)



When we say **UPTIME**, we mean  
**ENJOY THE  
 SHOW!**



SDN provides fast, reliable and secure broadband internet to businesses across South Dakota over a 50,000-mile fiber network. SDN keeps you connected so you can enjoy the **UPTIME!**



SIOUX FALLS

**CELEBRATING OUR 91ST SEASON**

**THE EVERLY SET**  
**THURSDAY, SEPTEMBER 29, 2022**

The Everly Set takes you back to 1957 when Phil and Don Everly first supercharged the vocal sound of Rock-n-Roll with their unique style of harmonies. Lead Singers Sean and Jack keep this great music alive with renditions of Wake Up Little Susie, When Will I Be Loved and more. **Golden Hits Celebration.**



**ATLANTIC CITY BOYS**  
**THURSDAY, OCTOBER 27, 2022**

Performing hits of the '50s and '60s Rock-n-Roll era like My Eyes Adored You, Ragdoll and Let's Hang On, the Atlantic City Boys create an evening of fun musical memories. These four dynamic lead singers have wowed audiences from Las Vegas to Disney World to Atlantic City. **Powerhouse Tribute.**



**THREE FIDDLERS HOLIDAY**  
**THURSDAY, DECEMBER 8, 2022**

The "Three Fiddlers Holiday" brings Kenny Putnam, Tom Schaefer, and Owen Dejong together with an all-star support band, some long-time performers with the Acoustic Christmas series, including Boyd Bristow, Mike Conner, Al Remund, Nick Schweback, Larry Rohrer, and special guests. Friends in college, the fiddlers have taken different performance paths through life and reunite with a holiday flavor to the instrumental harmonies they blend on stage.



**ILYA YAKUSHEV & THOMAS MESA**  
**THURSDAY, FEBRUARY 9, 2023**

Two world-class soloists combine for a powerhouse duo with international flair. Ilya Yakushev is known for his musical pyrotechnics on the piano and Thomas Mesa is heralded as one of the most charismatic and engaging cellists of his generation. **Stalwart Classical Duo.**



**DIVAS 3**  
**THURSDAY, APRIL 27, 2023**

Divas 3 consists of powerhouse Las Vegas vocalists performing your favorite chart-topping hits. Their three-part harmony arrangements joined by piano and tracks pays tribute to some of the biggest divas in music history including Cher, Dolly Parton, Whitney Houston, and more. **Three Voices...Four Decades of Music**



**ALL CONCERTS AT THE WASHINGTON PAVILION**

ADULT MEMBERSHIP FIVE CONCERTS AT \$180

SINGLE CONCERT TICKETS | AVAILABLE AUGUST 16 - \$37.50 EACH

CONTACT THE WASHINGTON PAVILION BOX OFFICE FOR TICKETS 605.367.6000



# Meet The Cast



## Abby Schwedhelm / Ensemble

Abby is so honored to come back to the Orpheum stage for this rockin show. You may have seen her previously with The Premiere Playhouse as Sally in *A Christmas Carol* and the Ballerina in the Premiere of Premiere's *Theatre at Night*. When Abby isn't at the theatre she loves to read and garden in her pajamas. Abby hopes you all enjoy this iconic and vibrant show.



## Audrey Simmons / Ensemble (Radio Voice)

Audrey feels incredibly honored to be a part of this production of *Grease* as an ensemble member and U/S for Jan, Marty, and Rizzo. This is Audrey's debut at The Premiere Playhouse (TPP) and the first time in 10 years that Audrey has been on stage! Audrey's free time not spent at TPP is dedicated to hiking, gardening, and scary movie marathons. "Thank you to my family and friends for your endless support in my pursuit of happiness. I love you all."



## Barry Longden / Roger

Barry (Roger aka "Rump") works full-time as a math teacher at Harrisburg High School. This is Barry's fourth production with The Premiere Playhouse. You last saw Barry in The Premiere Playhouse's production of *Young Frankenstein* as Dr. Frederick Frankenstein, along with previous productions of *Beauty and the Beast* (Lumiere) and *Mamma Mia!* (Ensemble). Barry thanks you from the bottom of his heart for getting off your behind, getting your butt in a seat, and enjoying this production of *Grease*.



## Bekki Kniep / Frenchy

Bekki is humbled and ecstatic to return to the TPP stage as Frenchy! Previous shows with The Premiere Playhouse include *A Christmas Carol* (Ghost of Christmas Past), *Young Frankenstein* (Ensemble), and *Footloose* (Betty Blast/ Principal Clarke). Unlike her onstage counterpart, Bekki did, in fact, finish beauty school! She is a busy Cosmetologist and Assistant Manager at a local spa. Outside of performing, she loves to read, bake, and spend time with her family, friends, and wonderful boyfriend. Bekki would like to extend a heartfelt thank you, and exuberant welcome to everyone coming to see the show!



## Berkley Fierro / Cha-Cha, Ensemble

Berkley is making her Premiere Playhouse debut as Cha-Cha. Previous roles include Amber Von Tussle in the ACTS (Rapid City, SD) production of *Hairspray!* From 9 to 5, Berkley works as an attorney in downtown Sioux Falls. In her free time, she enjoys playing rec volleyball, running, and spending time with loved ones. Berkley would like to thank you for coming to *Grease* and hopes this show will cha-cha its way into your heart!



# Meet The Cast

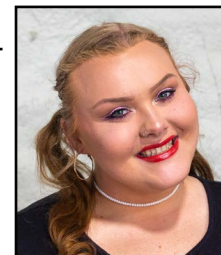
## Brooke Lynn Tollefson / Ensemble

Brooke Lynn has her first year on stage in a decade. She was in *The Wizard Of Oz* in 2013 and has finally decided to come back home to the stage. Outside of the show she recently joined the Air Guard, and is very excited to leave for basic training in August. When she is not singing and dancing to her heart's content she works at a country club here in town and is enjoying her work there! She loves to go hiking with her dog and spend time with friends and family. When she grows up she wants to be a history teacher and travel some of the world.



## Casey Schultz / Jan, Co-Dance Captain

Casey is no stranger to the Premier stage! You last saw her as the lovable and mean step sister in *Cinderella!* Casey is so excited to be back on stage playing Jan in *Grease!* She knows that this show is a favorite to many! She hopes that she can bring justice to the character but also a new light! She encourages everyone to remember to love themselves for who they are and what they look like. She would like to thank her parents, Wayne and Roxy, for teaching her to be the feisty, strong, and confident person she is today.



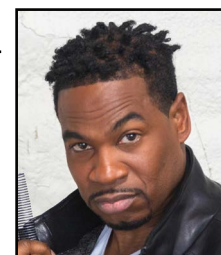
## Christian Heiberger / Johnny Casino, Ensemble

Christian was born to hand-jive along with all these cool cats and chicks for his 13th show since rejoining the theatre community in 2019, and won't stop there. When not performing, he works at the Glory House. Outside of his love for performing on stage, he enjoys playing D&D with his friends, free running/ climbing at Falls Park, baking for his friends and co-workers, and appearing as various characters for Simply Ever After Entertainment.



## Clinton Store / Kenickie

Clinton is honored to be a part of this incredible cast! His most recent credits include: *Cinderella* (Sebastian), *A Christmas Carol* (Ghost of Christmas Present), *Twas The Night Before* (Elf), *Cabaret* (Max/Herman), *Charlie Brown* (Franklin), and *Lombardi* (Dave Robinson). He has performed with The Premiere Playhouse, The Good Night Theatre Collective, The Mighty Corson Art Players, Monstrous Little Theatre, Broad Cast Theatre, The Sioux Falls Dinner Detective, appeared in independent films and commercials, and hosted local events. He also has a Masters of Science from DSU and is a retired Army Chief Warrant Officer. "I'm extremely grateful for the opportunities that the theatre community has given me and thank all of my family and friends for their support."



## Connor Klimek / Doody

Connor (He/Him) is excited to stumble his way onto the Orpheum stage as Doody! Connor has been living and working in the Sioux Falls area for most of his life, but most of his theatre experience has been in southwestern Minnesota in Pipestone and Lake Benton. He wants to thank his girlfriend for being the best and biggest fan he's got, and he wants to thank the rest of The Premiere Playhouse for being such a welcoming and fun-loving community!



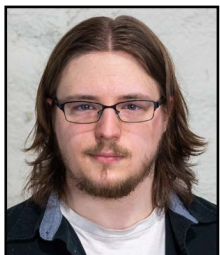


# Meet The Cast



## **Ebony Shanklin / Marty**

Ebony is back for a second performance on the TPP stage! After an amazing experience in the cast of *Cinderella* (Gabrielle), bringing Marty to life is a thrill. When not on stage time is spent working at Sanford as a Lab Assistant or hosting karaoke and such events at Pinnacle Productions. Love to the family and the boyfriend for all the love and support. These performances are dedicated to my brother who spent everyday watching this movie with me as a kid and my mother who put up with it! Happy Pride!



## **Jackson Heiberger / Ensemble**

Jackson is excited to return to the Orpheum stage in one of his favorite musicals! His previous credits include *Cinderella*, *Young Frankenstein*, *A Christmas Carol*, *Cabaret*, *Blood Brothers*, and *Footloose*. When away from the stage, Jackson can be found working overnights at the Glory House. In his free time, he likes to play piano, read, play video games, and sing the occasional karaoke. Jackson would like to thank his brother and fellow cast mate Christian for his encouragement and dedication over the years, and his girlfriend India for all her love and support.



## **Jamie Bowden / Off-Stage Swing**

Jamie is honored to join The Premiere Playhouse as they provide a fresh take on the musical classic *Grease*! Not only is this Jamie's first production with TPP, this marks his first theater production ever! With an interest in theater/film, in his free time, Jamie enjoys screenwriting and developing new screen/stage ideas. He is excited to be part of a fantastic cast/crew and hopes this is the first of many future productions with The Premiere Playhouse!



## **Josiah Southall / Ensemble**

Josiah has been away from the stage for 3 years and is excited to be apart of another amazing premiere playhouse production. Shows that he has have been apart of before were *A Christmas Carol* and *Mamma Mia!* When Josiah is not singing and grooving on the big stage, he loves hiking out doors, visiting his family, and practicing his culinary prowess! Josiah would like to thank you all for coming and enjoy the show that this wonder team has put together!



## **Kevin Wintering / Sonny, Fight Captain**

You may recognize Kevin from this season's Stage Management team. But he is excited to be making his TPP mainstage acting debut! Some of his previous acting credits include *The Curious Incident of the Dog in the Nighttime* (Ed), *The Crucible* (Cheever/Willard) 48, *Godspell* (Judas), and *Grease*, where he got to play Doody the first time around! He is excited to be back on stage with such a stellar cast and can't wait for everyone to see what new things we do with a fan favorite musical!



# Meet The Cast



## **Kianna Thelen / Patty Simcox**

Kianna is honored to be making her Premiere Playhouse debut as Patty Simcox as she takes the stage for her first time since high school! Outside of the theater, Kianna is currently attending medical school at the Sanford School of medicine pursuing her M.D., outside of balancing her love of theater and school, she enjoys running with her dog, conducting research, or volunteering for different community projects in Sioux Falls! Kianna wants to extend a big thank you to everyone for coming to the show and especially her friends and family who supported her in pursuing her passions during her education!



## **Madison Gerhart / Sandy**

Madi is so thrilled to rock out in Sandy's shoes in this outstanding production of *Grease*! Just last year, she made her Premiere Playhouse stage debut, in *Cabaret* (KitKat Swing) and *Young Frankenstein* (Inga U/S/Ensemble) with opportunities to shine in both shows, and had so much fun in TPP's magical production of *Cinderella* (Ella U/S/Ensemble)! Madi would like to take the time to thank her family and her closest friends along with past and present directors for their constant support and contributions to her love of theatre, they are the reason she loves the stage!



## **Mo Hurley / Vince Fontaine, Ensemble**

Mo is excited to be part of Rydell High's class of '59. Her previous experience with The Premiere Playhouse includes writing *The Theater at Night*, directing *Annie Jr.*, and performing in shows such as *The 39 Steps* (Clown #2), *The Odd Couple* (Vera), and *Lend Me a Tenor* (Maggie Saunders). Mo is the writer and producer of Fear Falls Radio Theatre, a collaboration with local performers sharing original monster stories in the style of '40s radio plays.



## **Patrick Simonsen / Eugene, Teen Angel**

Previously, Patrick (He/Him) played the Emcee in *Cabaret* and Prince Topher in *Rodgers and Hammerstein's Cinderella* at the Premiere Playhouse, Captain Von Trapp in *The Sound of Music* at Vermillion Community Theatre, and Mike Singer in *Zanna, Don't!* at the University of South Dakota. He would like to thank his family, friends, and The Premiere Playhouse for all of their support. He dedicates this and all performances to the LGBTQIA+ people who paved the way for future generations of queer people.



## **Stacie Soderstrom / Rizzo**

Stacie is ecstatic to be back on stage with The Premiere Playhouse! Stacie graduated from Augustana University with a B.A. in Communication Disorders and the University of South Dakota with an M.A. in Speech-Language Pathology. She was featured as a Guest Artist with The Good Night Theatre Collective this past season. Her most recent credits include *COMPANY* (April), *God of Carnage* (Annette Raleigh), *Salem* (Susannah), and *A Christmas Carol* (Belle). Stacie is honored to serve pediatric populations as a Speech-Language Pathologist. She would like to express immense gratitude to her family for providing support in her artistic pursuits.



LAKE AREA  
TECH COLLEGE

It is you.

WATERTOWN, SD

FREE  
TUITION

FREE  
TEXTBOOKS

FREE  
TOOLS

MAKE YOUR  
STORY  
EPIC

EARN A  
SCHOLARSHIP

See if you qualify for a full-ride  
Build Dakota Scholarship.



APPLY  
TODAY

1-800-657-4344 OR lakeareatech.edu

Put Your Business  
In The Spotlight.

When your business, group or  
organization needs to stand out,  
contact Queen On The Scene for  
custom enamel pins.

\*Queen On The Scene is the proud creator of the  
'120 Club Pin' for The Premiere Playhouse.

[www.QueenOnTheScene.com](http://www.QueenOnTheScene.com)



# Meet The Cast



## Ted Van Alstyne / *Danny*

Ted is thrilled to be making his Premiere Playhouse debut with the cast of *Grease*! Ted recently graduated from Augustana University, where he performed in numerous shows such as *Puberty: the Musical* (Aaron), *James and the Giant Peach* (Ensemble), and *Little Women* (Laurie). He is also an alum of Grandstreet Theatre in Helena, Montana, where he played Lead Guitarist in *Rock of Ages* and Oscar Delancey in *Newsies*. Ted has a BA in biology and will be starting medical school at the University of South Dakota this summer. He would like to thank his family for pushing him to pursue his passions and for always driving across the country to see his shows.



## Tiffany Koppes / *Ensemble, Co-Dance Captain*

Tiffany is excited to be back on stage after being away for a bit. She has been busy the past few years focusing on choreographing for different musicals, but missed being on stage and performing. Previous show credits include *Rock of Ages*, *Mary Poppins*, *Godspell*, *7 Brides for 7 Brothers*, and *West Side Story*. Tiffany would like to thank her husband for his patience and support and hopes y'all enjoy the show!



## Valerie Arens / *Miss Lynch*

Valerie, dubbed "Old Joe of *Grease*" by the ever succinct Casey Kustak, is excited to continue her journey with The Premiere Playhouse. After debuting in *A Christmas Carol*, and having the honor of helping bring Mo Hurley's vision to life in The Premiere Premieres *Theater at Night*, she is happy to be asked to join the *Grease* cast as Ms Lynch. Outside of theater, she stays busy singing with various live bands in the area, participating as a board member for the Rainbow Chorus, and getting her independent nursing business started. Otherwise, in her four minutes of free time a month, she can be found eating cheese and napping.



Tickets on sale now!



Performances at the Oscar Larson Performing Arts Center in Brookings, SD.

(605)688-6045 | [www.PrairieRep.org](http://www.PrairieRep.org)



## Godspell

Conceived and Originally Directed by John-Michael Tebelak  
Music and New Lyrics by Stephen Schwartz  
Originally Produced on the New York Stage by Edgar Lanchbury, Stewart Duncan, and Joseph Kerch  
June 7-9 at 7:30pm  
June 10 at 2:00pm



## Rumors

By Neil Simon

June 14-16 at 7:30pm  
June 17 at 2:00pm

## See How They Run

By Philip King

June 21-23 at 7:30pm  
June 24 at 2:00pm



## Oklahoma!

Music by Richard Rodgers  
Book and Lyrics by Oscar Hammerstein  
Based on the play "Green Grow the Lilacs" by Lynn Riggs  
Original Dances by Agnes De Mille

July 5-7 at 7:30pm  
July 8 at 2:00pm



When you're planning a *magical* ceremony, don't forget to book the officiant of your dreams!



## JACOB COX

Wedding Officiant

605-610-9850 - Call or Text

[Jake@SiouxFallsWeddingOfficiant.com](mailto:Jake@SiouxFallsWeddingOfficiant.com)

[www.SiouxFallsWeddingOfficiant.com](http://www.SiouxFallsWeddingOfficiant.com)



Congrats to everyone on  
an amazing show!!!

#KINDNESS



When You're Selling or Buying  
a Business

Choose the Broker with Knowledge, Integrity,  
Dependability, and Connections

Business Sales & Valuations  
Buyer Searches • Exit Planning  
Mergers & Acquisitions

Contact me for a complimentary,  
no-obligation consult TODAY!

Josh Grode Wolters, MBA  
Business Intermediary  
(605) 951-9555  
j.grode@murphybusiness.com



Developing lasting  
relationships through  
quality dentistry

(605) 361-9288



331-1103

www.aoksanitaryservice.com



Josiah's

104 W 12th Street  
Sioux Falls, SD 5704

www.josiah'scoffee.com

## Production Team



### Alex Newcomb Weiland / Production Manager

Alex (She/Her) works as the Production Specialist & Education Coordinator at The Premiere Playhouse. She graduated from The University of South Dakota with a BFA in Musical Theatre/Dance Minor. Alex has worked with companies such as Bare Bodkins, Good Night Theatre Collective and The Black Hills Playhouse. She directed *Footloose* in Season 18 & *Cinderella* in Season 20 at The Premiere Playhouse as well as *Stop Kiss* with Monstrous Little Theatre Company. She wants to thank her partner, Nathan, her friends, family, TPP staff, production team & cast for their continued love & support. This is truly a community of giving! Enjoy the show!

### Alexondrea Thong Vanh / Charge Scenic Artist

Alexondrea is thrilled to join the magic of this show! Alex graduated from American Musical Dramatic Academy New York and University of South Dakota (Bachelor of Fine Arts in Theatre/Acting). She is a local theatre/commercial actor, singer, and scenic painter for both The Premiere Playhouse and Good Night Theatre Collective. In any free time, she enjoys baking and laughing with her husband and two boys.  
[www.alexondreadi.com](http://www.alexondreadi.com) @alexondreadi

### Brittney Lewis / Costume, Hair, & Makeup Designer, Costume Shop Manager

Brittney graduated from the University of South Dakota in May 2022 with a degree in Costume Design and Construction. Her most recent credits are directing the world premiere of *The Theater at Night* and costume designing Rodger and Hammerstein's *Cinderella*. For the Premiere Playhouse, she recently costume designed *Cinderella*, *Young Frankenstein*, and The Penguin Project's *Annie Jr*. This is one of Brittney's favorite costume periods and it has been so fun exploring the blend between vintage 1950s looks and contemporary styles. Sit back and enjoy the show, Grease is the word!

### Casey Kustak / Assistant Stage Director

After performing on and off stage, in the shower and in your dreams; Casey makes his debut behind the scenes for The Premiere Playhouse. You may recognize some of Casey's previous work as a Director on: *Eating Across America: A Tribute to the Hot Dog*, *One, Two, Three Little Amigos*, *Susan Sarandon's New Hip: A Disjointed Documentary*, and *Shaq's Biggest All Stars Celebrate Britains Great Bed Making*. This show is dedicated to his amazing wife, Abby and two kids, B and P. Thank you for everything. Enjoy the show and tell your friends! Steve, you can eat it.

### Corey Shelsta / Lighting Designer

Corey is a Professor of Theatre at South Dakota State University where he designs lighting, scenery, and sound for productions at SDSU and other theatres in the region. He teaches courses in design, technical production, and theatre history. Recent credits: Lighting Design: *Footloose*, *Little Shop of Horrors* - Prairie Repertory Theatre; *A Christmas Carol*, *Cabaret* (Sioux Falls Stage Award - Best Technical Achievement) - Premiere Playhouse. Scenic Design: *Carrie the Musical*, *The Hunchback of Notre Dame* - SDSU Theatre; *Godspell*, *The Play that Goes Wrong* - Prairie Repertory Theatre. Corey is excited for the opportunity to return to The Premiere Playhouse for Grease and wants to thank his wife, Stacy, for all her love and support.





# Production Team

## **Elizabeth Wintering** / *Assistant Stage Manager*

---

Elizabeth is very excited to be behind the scenes at Rydell High! She has been helping execute the past few shows with The Premiere Playhouse, as a stage hand for *A Christmas Carol* and *Cinderella*, as well as Assistant Stage Manager for *The Premiere Premieres*. When she's not behind the curtain, she's teaching preschoolers, studying for her Associate's in Children and Family Ministry, or hanging out with her wonderful friends! She'd like to thank her husband Kevin for his loving support, always.

## **Erika Waxdahl** / *Stage Manager*

---

Erika (She/Her) is excited to be apart of her first show with The Premiere Playhouse! She graduated from The University of South Dakota in May with a BFA in Theatre Studies. Previously she has stage managed *Eurydice* and [title of show] at USD and *Peter and the Starcatcher* at Prairie Repertory Theatre. Outside of theatre, she likes to read, watch hockey, and rewatch TV shows she's already seen four times. She would like to thank her family for their support, but especially her mom who pushed her to pursue a theater degree instead of a political science one.

## **Jake Cox** / *Properties Artisan*

---

Jacob "Jake" Cox is the Properties Artisan and an all-around hip daddy-o. If you respect the props, you'll have it made in the shade; If you don't, you might get a knuckle sandwich! Jake's no square, and if you want to get circled, dig Jacob Cox - Wedding Officiant at SiouxFallsWeddingOfficiant.com and schedule your wedding or vow renewal! The word from the bird is that Jake also wrote a novel - Mr. Smith Isn't Afraid of the Dark, available at amzn.to/3eK9GKG

## **Jamie Bowden** / *Production Assistant*

---

Jamie is honored to join The Premiere Playhouse as they provide a fresh take on the musical classic *Grease*! Not only is this Jamie's first production with TPP, this marks his first theater production ever! With an interest in theater/film, in his free time, Jamie enjoys screenwriting and developing new screen/stage ideas. He is excited to be part of a fantastic cast/crew and hopes this is the first of many future productions with The Premiere Playhouse!

## **Magen Richeal** / *Choreographer*

---

Magen has danced her entire life as a student, teacher, choreographer, and studio owner. She has choreographed countless dance and competitive cheer routines, as well as, for musical theatre. A few of her most recent musical theatre credits include *Beauty and the Beast*, *Blood Brothers*, and *Cabaret* for The Premiere Playhouse. Magen is excited to be part of bringing *Grease* to the Orpheum stage. She would like to thank the entire *Grease* team for their shared love of music and theatre!

## **Matthew Walicke** / *Music Director*

---

Matthew is thrilled to be the music director for this production of *Grease*. He is an active conductor, composer, singer, voice teacher, and organist / pianist, in his 13th year as Director of Music and Worship Arts at Gloria Dei Lutheran Church. An active music director, producer, arranger, composer, and actor in the local theatre scene, Matt has recently been involved in The Premiere Playhouse's productions of *Young Frankenstein*, *Annie Jr.*, *Cabaret*, and *A Christmas Carol*. Matthew enjoys cooking, hiking, and traveling with his wife Tasondra, their kids, Paul, Evan and Abi, and their two dogs, Arya and Rocko.

# Production Team



## **Oliver Mayes** / *Producer, Casting/Stage Director*

---

Oliver is a theatre & media artist whose work has been showcased in several states throughout the U.S. including Arkansas, California, Michigan, New Jersey, New York, Oregon, South Dakota, and Virginia. With a background in acting, directing, producing, movement choreography, writing, and teaching, his credits span various mediums and genres. He is the recipient of several honors, including the Kennedy Center's 2020 Stage Directors & Choreographers Society Fellowship. Oliver is a scholarship alumnus of the Kennedy Center Directing Intensive and an associate member of the Stage Directors & Choreographers Society, the national union for professional stage directors and choreographers. He holds an MFA in Theatre Directing from University of South Dakota and a BFA in Music Theatre from AMDA College of the Performing Arts. This one's for you, g-ma. Love you more.

## **Pierce Humke** / *Technical Director*

---

It's been an exciting year for Pierce, and it's fun to be part of such an iconic show. As Stage Manager and Technical Specialist for The Premiere Playhouse it's so rewarding to collaborate with such an adverse variety of local creative talent. "To see such a realm of opportunity in this community is so awesome! I'm so happy to be involved, and I'm thrilled for what's to come!" Pierce cherishes his family and is grateful for their support.

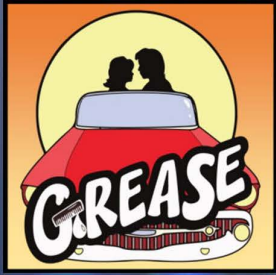
## **Victor E. Shonk** / *Scenic Designer*

---

Victor has been working as a professional scenic designer since 1996. He has designed scenery for television, theatre, and opera in many state across the country including South Dakota, Massachusetts, Wisconsin, California, New York, Michigan, Colorado, Mississippi, Oklahoma, Pennsylvania, and Ohio. Victor's work with The Premiere Playhouse has included designing sets for *To Kill A Mockingbird*, *Little Shop of Horrors*, *Rock of Ages*, and *A Christmas Carol*. He is the Resident Scenic Designer/Associate Professor at the University of South Dakota and is a proud member of United Scenic Artists, Local 829.



# Mitchell Area Community Theatre Celebrating Season 30 2022 - 2023



**AUGUST 5, 6, 7 & 12, 13, 14 –2022**

Show Sponsor: Mitchell Radio Group & Toshiba  
Book, Music, and Lyrics by Jim Jacobs and Warren Casey



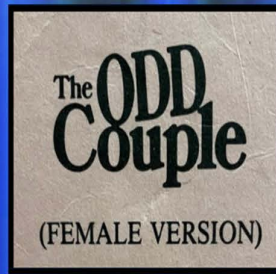
**OCTOBER 7, 8, 9 & 14, 15, 16 –2022**

By Sylvia Ashby  
Adapted from Frances Hodgson Burnett's classic novel



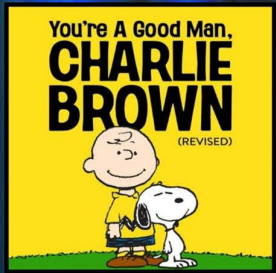
**DECEMBER 2, 3, 4 & 9, 10, 11 –2022**

Show Sponsor: Timothy M. Drake, DDS  
Written by Greta Groshch, Music and Lyrics by Dennis Curley & Drew Jansen



**FEBRUARY 10, 11, 12 & 17, 18, 19–2023**

By Neil Simon



**MAY 5, 6, 7 & 12, 13, 14 –2023**

Show Sponsor: Nedved Media  
Based on The Comic Strip "Peanuts" by Charles M. Schulz.  
Book, Music and Lyrics by Clark Gesner. Additional Dialogue by Michael Mayer;  
Additional Music and Lyrics by Andrew Lippa



**JULY 7 & 8 –2023**

ACT Youth Summer Performance  
By Patrick Flynn. Based on the works of J.M. Barrie

"Grease", "The Secret Garden" & "The Odd Couple—Female Version" is presented by special arrangement with Samuel French, Inc., a Concord Theatricals Company; "Away in the Basement, A Church Basement Ladies Christmas" was originally commissioned & produced by Troupe America, Inc.; "You're a Good Man, Charlie Brown" is presented by special arrangement with Concord Theatricals on behalf of Tams-Witmark LLC; "Tinker Bell" is produced through special arrangement with the Dramatic Publishing Company, Inc., Woodstock, IL.

SPECIAL THANK YOU TO A.C.T. SEASON 30 SHOW SPONSORS



SCAN code to access additional information about each show. For Memberships and Tickets, call 996-9137



700 N. Main Street - Mitchell, SD



605-996-9137



mitchellact.org



## Partners

**"Greased Lightning" provided through partnership with:**



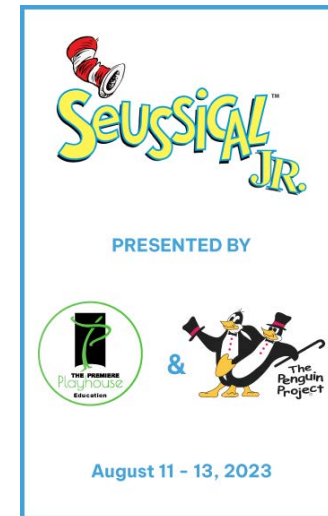
**SOUTH DAKOTA STATE UNIVERSITY**  
School of Performing Arts



**LAKE AREA TECHNICAL COLLEGE**



## For The Kids!



Register your child today!

[thepremiereplayhouse.com/education](http://thepremiereplayhouse.com/education)



700 N. Main Street - Mitchell, SD



605-996-9137



mitchellact.org



# The Premiere Playhouse Team

- Managing Artistic Director**    Oliver Mayes
- Production Specialist & Education Coordinator**    Alex Newcomb Weiland
- Stage & Technical Specialist**    Pierce Humke
- Development Officer**    Rachel Smith
- Finance & Office Administrator**    Amber Sumner
- Web & Media Developer**    Chris Berke
- Education Assistant**    Abby Kustak
- Ad Sales Associate**    Kristy Morris



# Board of Directors

- Rick Weiland** – *President*
- Tammi Haverly** – *Vice President*
- Sarah Tuntland** – *Treasurer*
- Steve Veenhof** – *Secretary*
- Thomas Kapusta**
- Kevin Cole**
- Kelly Boyd**
- Vickie Britson**
- John Schlimgen**
- Otis Priester**
- Clinton Store**
- Scott Ostman**
- Matt Nesmith**
- Lary B. Etten** – **Member At Large**

# Special Thanks



- Families of The Penguin Project**
- Vermillion Community Theatre**
- Lights Up Productions**
- SDSU School of Performing Arts**
- USD Department of Theatre**
- Lake Area Technical College**
- Doug Smith at Competition Cycle**
- Ben Van Moer**
- Aleen Fisher**



VISIT YOUR LOCAL CULVER'S RESTAURANTS:

- Culver's of Sioux Falls, SD**
- 2509 S Louise Ave
- 2800 S Minnesota Ave
- 770 W Empire Mall
- 5601 E Arrowhead Pkwy
- 6301 S Louise Ave



CULVERS.COM

**Commercial Free Hours**  
**All Day, Every Day!**



**kelofm.com**



402 n main avenue

605-444-4266 • [dadagastropub.com](http://dadagastropub.com)  
all ages • tues - sat • open at 4pm

*Parker's*  
BISTRO

**DADA**  
GASTROPUB

**ICON**  
EVENTS

*A hospitality philosophy that aspires to deliver an excellent experience, welcoming all.*



# SEASON 21



*The Little Mermaid*

Sept 28 - Oct 8, 2023



*A Christmas Carol*

Dec 15 - 23, 2023



The Premiere Premieres

Feb 15 - 18, 2024



*OKLAHOMA!*

April 11 - 21, 2024



*HAIR*

June 13 - 23, 2024



*The Glass Menagerie*

\*Expand Your Subscription!

March 15 - 17, 2024

# SUBSCRIBE TODAY!

Box Office: 605.367.6000

[www.thepremiereplayhouse.com](http://www.thepremiereplayhouse.com)

\*Expand your Season 21 subscription by adding a 6th show option! Subscribers will be contacted by The Premiere Playhouse about this production and those interested will receive discounted pricing and exclusive seating options.