

PLAYBILL

THE SIOUX EMPIRE COMMUNITY THEATRE PRESENTS

Produced by special arrangement with Playscripts, Inc.
(www.playscripts.com)

IT'S A WONDERFUL LIFE



A LIVE RADIO PLAY

Adapted by
JOE LANDRY



DECEMBER 3 - 13, 2020



First National Bank

www.fnbsf.com The First National Bank in Sioux Falls® Member FDIC

SANFORD[™]
HEALTH



**First National
Wealth Management**

Located at The First National Bank in Sioux Falls®

A LEGACY OF SUCCESS.

As part of a bank with a 135-year history, we know a thing or two about success. We know what it's like to work hard for what you have and the importance of protecting what you've built. Contact us for a better wealth management experience at wealth@fnbsf.com.



100 South Phillips Avenue • (605) 335-5180 • fnbsf.com

FRIENDS OF SECT

Director | \$5000+

- Wanda Covington Endowment of the SFACF
- Knudson, Dave and De
- Sanford Health
- First National Bank
- Kenneth and Cheryl Walter Family Endowment
- Weiland, Samuelson and Roosevelt, LLC
- First Premiere Bank
- Giving Hope
- Kirby, Dan and Arlene

Playwright | \$1000 - 4,999

CNA Surety
Culver's
Fodness, Mike and Chris
Joyce DeGroot Community
Theatre Endowment of the
SFACF

Lead Role | \$500 - \$999

Jennings, Brian and Sarah

Spotlight | \$100 - \$499

Bowman, Jerry
Hall, Sylvia
Jill's Daycare and Preschool
Kubat, Bill and Joyce
Larson, Duane and Mabel
Madison, Dean & Kristi
Mcintyre, John
McLaughlin, John
Nicolay, Jan
Shannon, Red and Irene
Thompson, Christine
Van Der Bill, Kathlyn
Vavra, Jenny
Veenhof, Steve

Supporting Cast | \$0 - \$99

Barnett, Nancy
Bentz, Jay
Bethke, Breanna
Blocker, Gail
Caldwell, Larry
Christensen, Ronald and Kay
Chuanpit, Wei
Coombs, Linda
David Baumeister Jr.
Deberg, Amy
Faber, Sheryl
Flynn, Carol
Gerberding, Bette
Goldammer, Michaela
Hallenbeck, Mark and Nancy
Halverson, Bruce and Nancy
Johannsen, Jess
Jones, Debbi
Lawrence, Madison
Lenderts, Keaton
Masters, Jennifer
Meier, Linda
Nelson, Bob
Nesiba, Ronald
Newcomb-Weiland, Alex
Peters, Fred
Pottratz-Anderson, Ruthie
Rieck, Matthew
Schofield, Amy
Schulte, Linda
Schulz-Elsing, Sharon
Simmons, Thomas
Sopko, Darlene
Smotherman, Tom
Sopko, Darlene
Spencer, Linda
Spomer, Todd
Weiland, Donnie
Weiland, Kevin
Wenzel, E. Stuart

KELO

On the Air

Starting

TONIGHT

6:45 TO 12:00 P. M.

—And Every Day, Noon to Midnight

**NATIONAL BROADCASTING
PROGRAMS**

TUNE TO

KELO 1200 KC

On Your Dial

EXECUTIVE DIRECTOR'S NOTE

Welcome Back!

It's been 9 months since we last performed a live stage show, and although we have been dark throughout that period, we have managed to keep our audience and volunteers engaged through the many radio plays that we have produced. If you did not get the opportunity to listen to any of those shows, visit www.sioxfordtheatre.com and you will find them there, free of charge for your entertainment.

I hope that when you arrived at the Orpheum tonight you could clearly see the lengths that we have gone to in our efforts to make your experience tonight as safe as is possible during these pandemic times that we are living through. Many thanks to 3M in Brookings for their assistance in planning your entrance and exit to and from the auditorium. They have applied their workflow expertise to audience flow, and we believe that this approach will help to maintain social distancing while you are here as our guests. Please always wear your masks when you are not eating or drinking, and follow the instructions of the ushers when it's time to leave the Theatre.

I would like to thank our Director Amy Morrison and her cast and crew, not only for the hard work that they have put in to making this performance possible, but also for their full cooperation in following our Covid Action Plan. They have worked hard to keep themselves and everyone associated with this production safe.

Finally, many thanks to our Sponsors Sanford Health and First National Bank for their financial support in times when every non profit organization is looking for philanthropic support. Thank you also to Culver's for their financial support of our in play radio advertising.

If you enjoy your experience here tonight, please spread the word and encourage others to see the show and reassure them about our safety standards. We cannot give guarantees, but we have implemented strict protocols in order to mitigate the risk, and we thank you for supporting community theatre.

Good health and A Merry Christmas to you all from the Sioux Empire Community Theatre.

Robin Byrne

Sioux Empire Community Theatre's Executive Director



Sioux Falls Mini Movers



**Professional
Movers**

- at -

**Do-it-yourself
Prices...**

605.361.9363

Ask About Our
Storage Options Too!

urban ARCHAEOLOGY

Downtown, Sioux Falls

antiques • vintage • curiosities

605.271.8955 | urbanarchaelolgy605@gmail.com

126 South Phillips Avenue, Sioux Falls SD

DIRECTOR'S NOTE

Thank you for joining us for this performance of *It's a Wonderful Life*. What an absolute joy it has been to work with such a delightful group of people, both on the stage and behind the scenes, to bring this show to you today. And thank YOU for supporting live local theatre.

This talented group of artists has pulled together (while remaining safely distanced, sometimes using technology to connect remotely) to create an environment of warmth, nostalgia, and love amidst the strangeness of this year's holiday season.

If ever there was a year when the timeless message of this show was needed, I think 2020 might be it. So join us in our little world. Forget your worries and cares for the next 2 hours, and be reminded of one very important thing:

You matter. You are loved. Your life makes all the difference in this world.

Merry Christmas!

Amy Morrison

Sioux Empire Community Theatre Director.

INFORMATION FROM THE THEATRE

Our COVID-19 policy is, above all, to keep everyone safe. Please wear a mask, wash your hands, and stay socially-distanced at all times.

Thank you and enjoy the show!



JOIN THE 120 CLUB!

The Sioux Empire Community Theatre is excited to announce our new community outreach program, **The 120 Club!**

Your gift of just \$10 per month will help us provide theatre tickets to people in our community that likely would otherwise not be able to experience the joy of live theatre without your help.

Organizations we work with include:

The Children's Home Society

St. Francis House

Bishop Dudley House

The Banquet

Active Generations

Southeastern Directions For Life

Lifescape

Penguin Project

SIGN UP TODAY AT
WWW.SIOUXFALLSTHEATRE.COM

CAST & CREW

Cast

**Jake Laurent/
George Baily**

Drew Veurink
Beau McGregor

**Sally Applewhite/
Mary Hatch**

Emily Wilson
Amy Gage

**Freddie Fillmore/
Announcer**

Stuart Melby
Donovan Minor

Harry “Jazzbo” Jenkins

Clinton Store
Gavin Wigg

Lana Sherwood

Mo Plastow
Marisa Moser

**Foley Opearator/
Stage Manager**

Kjerstin Smith
Madison Rimmer

CAST & CREW

Crew

Director	Amy Morrison
Stage Manager	Tori Frahm
Assistant Stage Manager	Elise VerHey
Music Director	Amy Morrison
Costume Director	Kendra Dexter
Asst. Costume Director	Janet Liesinger
Radio Advertisements	Written by Robin Byrne & Amy Morrison
Prop Master	Elise VerHey
Master Carpenter	John Harris
Paint Charge	Sam Lopez
Hair Design	Anna Crawford
Set Designer	John Harris
Sound Designer	Brian Adams
Lighting Designer	Matt Cook
Soundboard Operator	Xander Morrison
Photographer	Rachel Winters
Crew	Todd Nelson

Band

Keyboards	Jonah Schilling
Guitar	Michael Pagone
Drums	Jackson Lapour
Bass	Maia Morrison
Trombone	Kate Pfeifle
Trumpet	Scott Bailey

MEET THE CAST



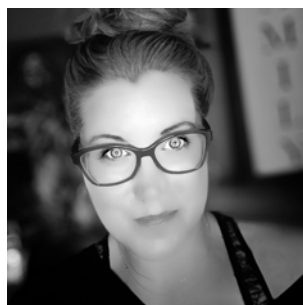
DREW VEURINK



BEAU MCGREGOR



EMILY WILSON



AMY GAGE



STUART MELBY



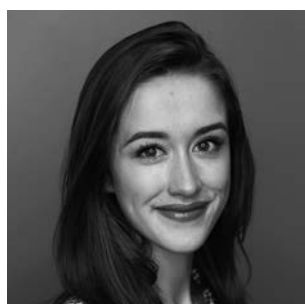
DONOVAN MINOR



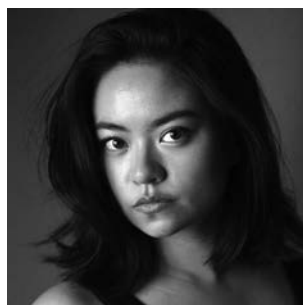
CLINTON STORE



GAVIN WIGG



MO PLASTOW



MARISA MOSER



KJERSTIN SMITH



MADISON RIMMER

MEET THE CAST

DREW VEURINK | *Jake Laurent / George Bailey*

Drew Veurink is absolutely ecstatic to be making his first appearance with the Sioux Empire Community Theatre. He has recently performed in such shows as *Lost in Vegas* (Agent Salvatore), *Heaven to Heaven* (Jesus Christ), and *Prodigal Son* (Carl Schmitt). Drew recently graduated from the University of Sioux Falls, with a degree in History Education. In his spare time, Drew is building a career as a free-lance voice actor, and pursues the idea of establishing a brand new improv troupe in the Sioux Falls area.

BEAU MCGREGOR | *Jake Laurent / George Bailey*

Beau McGregor is excited to return to the Sioux Empire Community Theatre stage! You might recognize him from the Sioux Empire Community Theatre's production of *Avenue Q* (Rod). For the past four years, Beau has been living in western Massachusetts where he is a Preschool Teacher. He participated in three shows at Exit 7 community theater including: *You Can't Take It With You* (Ed), *Avenue Q* (Rod), and *Tommy* (Uncle Ernie). Beau enjoys playing guitar, singing, reading, and posting TikTok videos.

EMILY WILSON | *Sally Applewhite / Mary Hatch*

Emily Wilson is delighted to be returning to the Orpheum Stage as Sally Applewhite/Mary Hatch. Emily was most recently seen in the Sioux Empire Community Theatre's production of *Steel Magnolias* (Shelby) and *Christmas Carol* (Ghost of Christmas Past). Emily was just in Monster Mash with the Good Night Theatre Company and in the Monstrous Little Theatre Company's production of *Melancholy Play* (Frances). When Emily is not at rehearsals; she's running, hiking, or playing with her rambunctious boys Colin (9) and Everett (6). Emily would like to thank her husband, Chris, for his continued support and love.

AMY GAGE | *Sally Applewhite / Mary Hatch*

Amy Gage is excited to be making her debut with the Sioux Empire Community Theatre. She was most recently seen on stage in *Lost in Vegas* (Ensemble). Amy's day job as a Nurse Case Manager keeps her busy, but not as busy as her job as wife and mom of 5. In her free time, Amy enjoys spending time with her family, singing, and watching reality TV shows.

CODY'S

★ SMOKEHOUSE ★

darn good bbq.

DINE IN | CARRY OUT | CATERING



WORLD CHAMPION BBQ.

2017 NATIONAL BBQ CHAMPIONSHIP IN HOUSTON TEXAS
2016 SAM'S CLUB NATIONAL CHAMPIONSHIP
2016 AMERICAN ROYAL OPEN
2014 JACK DANIELS WORLD CHAMPIONSHIP
2014 KING OF THE SMOKER
2013 AMERICAN ROYAL OPEN
2013 KINGSFORD INVITATIONAL IN NEW YORK CITY

6401 SOUTH LOUISE AVE
SIOUX FALLS, SD 57108

605-271-9225
CODYSSMOKEHOUSEBBQ.COM

MEET THE CAST

STUART MELBY | *Freddie Fillmore / Announcer*

Stuart Melby (Freddie Fillmore and others) is making the trip from Brookings to meet a new group of actors and theatre people! A community theatre veteran, In the last 20 years, Stuart has been in about 50 productions in Brookings, Lake Benton Mn, Watertown , Flandreau , Pipestone Mn, and others. Normally typecast as a clueless, loudmouthed, but hopefully lovable character, Stu has played the role of (Tevye) *Fiddler on the Roof*, (Oscar Madison) *Odd Couple*, (Ebenezer Scrooge) *Christmas Carol*, the Musical among others. Stu and wife Kathy have a portrait studio in Brookings so he is used to acting weird in front of groups of people! Golf , hot peppers, and sarcasm are some of his interests.

DONOVAN MINOR | *Freddie Fillmore / Announcer*

Donovan Minor is making his debut with the Sioux Empire Community Theatre. This is his first time acting in a show since graduating from University of Sioux Falls in 2017. While at the University of Sioux Falls, he starred in *Much Ado About Nothing* (Don Jon) *Charlie Brown* (Schroeder) and the *Pilgrim's Progress* (The Pilgrim). He also spent two summers in the cast of Storyland Children's Theatre. In his free time he bartends at Remedy Brewing and takes care of his two cats, Paul and Moses.

CLINTON STORE | *Harry "Jazzbo" Jenkins*

Clinton M. Store is excited to make his stage debut with the Sioux Empire Community Theatre. His recent theatre credits include *The Good Night Theatre Garden Party – Monster Mash* (Sweeney Todd), *The Dinner Detective* (Detective Richard), *Pale Dawn* (Professor Les Fields), commercial acting for various organizations, and has voice acted multiple characters for several Sioux Empire Community Theatre Radio Plays. Clinton also works in Cyber Security and is a member of the Army National Guard. When he's not working, performing or spending time with his family or friends, you'll probably find him at the gym or walking his dog downtown.

GAVIN WIGG | *Harry "Jazzbo" Jenkins*

Attempting to have a fun ending to an inarguably odd year, Gavin tried something new and different as (Harry "Jazzbo" Heywood) playing ten character voices in *It's a Wonderful Life*. His theatre credits previously include playing Fezziwig 33 years ago for Cleveland Elementary's *Christmas Carol*. Gavin creates animated and video media for businesses, government entities, and marketing professionals. He is a professional trumpet player in eight bands and enjoys reading science texts and biographies on his Kindle. Gavin also collects retro video-gaming magazines and memorabilia.



**BAKER AUDIOLOGY
& HEARING AIDS**



*"Hearing professionals who are committed
to help you hear the sound of life."*



**BAKER AUDIOLOGY
& HEARING AIDS**

605.306.5756 429 W 69th St.
siouxfallshearing.com Sioux Falls, SD 57108

\$800 OFF
A PAIR OF
HEARING AIDS
+
FREE
**HEARING
SCREENING**



**Dental
Wellness**



Dr. Devren Anderson

6104 S Lyncrest Ave
Sioux Falls, SD 57108

605.274.6191

www.1DentalWellness.com



Child's Play Toys
A unique
toy shop for
curious kids

**233 S Phillips Ave.
Sioux Falls, SD 57104**

**605-274-TOYS
(8697)**

MEET THE CAST

MO PLASTOW / *Lana Sherwood*

Mo Plastow is thrilled to be making her debut to the Sioux Empire Community Theatre stage. She was involved with *Beauty and the Beast*, but was unable to perform last season, due to the unforeseen circumstances. Mo attends the University of Sioux Falls. Recently, she has been in *Loving Arms* (Voice 2), *Arsenic & Old Lace* (Lieutenant Rooney), and *Disney's Newsies* (Katherine Plumber). She is pursuing a degree in Professional Accounting and Business Administration along with a degree in Communication Studies and Theatre. When Mo has a free moment, she enjoys napping, drinking coffee or tea and reading, in that order.

MARISA MOSER / *Lana Sherwood*

Marisa Moser is delighted to be returning to the Sioux Empire Community Theatre stage! Her previous shows with the Sioux Empire Community Theatre include *Lend Me A Tenor* and *Mamma Mia!*, and her most recent work includes *Monster Mash* (Goodnight Theatre Collective and Monstrous Little Theatre Co.) *A Girl Named Destiny* (Monstrous Little Theatre Co.), *When Your Inner Voice Is Your Guide to Dating* (dir. Wendy Zhao), and *I Am Nothing but Nice to You* (dir. Dempsey Tapely, Homesick Productions).

KJERSTIN SMITH / *Foley Operator / Stage Manager*

Kjerstin Smith is happy to be back on stage for her second Sioux Empire Community Theatre production. She is grateful to work with such a talented cast and crew to bring to life one of her all-time favorite movies. Kjerstin is currently the librarian at Edison Middle School. She thanks her family for their support and encouragement.

MADISON RIMMER / *Foley Operator / Stage Manager*

Madison Lynn Rimmer is delighted to be back on the Sioux Empire Community Theatre stage! Recent and favorite credits include (Liz) in the cancelled production of *Chicago* with the Good Night Theatre Collective, *Mamma Mia* (Ali), *She Loves Me* (Ilona), and *Into the Woods* (Little Red). Madison has also worked professionally for the Black Hills Playhouse in *Oklahoma!* (Kate) and *The Game's Afoot!* (Inspector Goring). Madison is a recent theatre graduate of USF. She also completed an internship in New York City at Open Jar Studios and will be moving to NYC full time in January. You can catch her one last time in *The Royal Cabaret* with the Goodnight Theatre Collective this January.

Let's turn your home into **entertainment central.**

From streaming your favorite shows, movies and music to gotta-have-it extras like HBO® and TiVo® DVRs, Midco® makes it easy to live it up. And when you add home security and automation, you'll have your entire house in the palm of your hand.

Are you ready to Midco? Let's go!



MIDCO®

1.800.888.1300 | Midco.com

Services may not be available in all areas, and some restrictions apply. Visit Midco.com/Shop to check serviceability.
© 2019 Midcontinent Communications. All Rights Reserved.

MEET THE CREW

AMY MORRISON / *Director / Music Director*

Amy Morrison (Director/Music Director) is usually on the stage or at the piano for shows. This is her directing debut with Sioux Empire Community Theatre. She has been in two shows on this stage, *Steel Magnolias* (Truvy), and *Les Misérables* (ensemble). She was music director for *Mama Mia!* in 2019. She is a regular on The Good Night Theatre Collective stage, was in *Dead Man's Cell Phone* (Mrs. Gottleib) with Monstrous Little Theatre Company and 9 of Opera South Dakota/ Sounds of South Dakota's Fairytale Operas in the Park. Amy is usually involved with the music end of theatre productions at the University of Sioux Falls, either as music director or as a musician.

Amy holds a Bachelor of Music in vocal performance from the University of South Dakota and a Master of Music in Choral Conducting from the University of Northern Colorado. She has worked as an adjunct vocal instructor for the University of Sioux Falls since 2006. She has been married to her high school sweetheart, Matt, for 28 years, has two kids- Xander & Maia, and a cat named Monica Lewhiskers.

TORI FRAHM / *Stage Manager*

Tori Frahm is a Senior Communication Studies and Theatre Major with Minors in Spanish and English at the University of Sioux Falls. Originally from Wakefield, Nebraska, Tori Frahm came to the University of Sioux Falls as a freshman in the fall of 2017. Since then, she has been a part of several USF's productions, fulfilling several roles in the process. Beginning with her USF debut as Dotty Otley in *Noises Off*, followed by a job as the makeup artist for *Into the Woods*. She then pulled double duty for USF's production of *Life is a Dream* playing both a lady and a rebel and handling makeup for the show as well. In the spring of 2019, she played the ridiculous bumbling Head Waitress in *She Loves Me*. This past fall, she acted in USF world premiere of *Heaven to Heaven* and once again has reprised her role of makeup artist. She then continued her theatrical career by stage managing *Loving Arms*, a world premier written by one of USF's most beloved professors. She was cast in USF's production of *Singin' in the Rain* in the spring of 2020 as the goofy reporter, Dora Bailey. Unfortunately, like many things in March of 2020, that experience was cut short by the Corona Virus Pandemic. Tori says that she loves and adores theatre and it has been the pleasure of her life to work with such wonderful and talented people through Sioux Empire Community Theatre. Tori has plans to continue her education following graduation pursuing an M.F.A in Theatre, in hopes of one day teaching Theatre at the Higher Education level.

ELISE VERHEY / *Asst. Stage Manager / Prop Master*

Elise (assistant stage manager, props master) is from Edgerton, Minnesota. She is excited to be working with Sioux Empire Community Theatre. She has been involved with shows like *Heaven to Heaven* (various roles), *Life is a Dream* (lady in waiting, rebel), *She Loves Me* (stage crew), and *Singing in the Rain* (Olga Mara.) Elise is studying psychology and criminal justice at the University of Sioux Falls. She belongs to the improv club and sings in various choral groups there. When Elise has free time, she enjoys writing music, painting, and watching various crime shows.

MEET THE CREW

KENDRA DEXTER / *Costume Designer*

Kendra Dexter (Costume Designer) owner of Designs By Dexter, Kendra has made everything from wedding gowns to Irish dance costumes. Her recent achievements include work on a short film project and an American College Theater Festival Award for her design work on *Much Ado About Nothing* (Fall 2016) at the University of Sioux Falls. Kendra runs her business and is the Costume Director for the University of Sioux Falls and O'Gorman High School. Kendra has costumed more than 75 shows in South Dakota, several of which were right here at your Sioux Empire Community Theater.

JANET LIESINGER / *Asst. Costume Director*

Janet Liesinger (Asst. Costume Director) is keeping her retirement busy with her love for theater. While she will tell you she is not creative, she sure has a knack for creative costumes. When not backstage working as a super talented seamstress she spends most of her time with her 5 grandchildren who all live close by.

JOHN HARRIS / *Set Designer / Carpenter*

John grew up in Yankton, SD, and graduated from Mount Marty College with a BA in Business Administration. John has resided in Sioux Falls since 1972. His early career was spent working as a sales representative for major consumer product manufacturers before realizing his true passion in the construction industry as a general contractor. Now semi-retired, he still stays busy working and doing small construction projects and handyman work for others. He has always had a love for the theater. The skills he has acquired over the years serve him well moving from the audience to backstage as Master Carpenter for the Sioux Empire Community Theatre. His favorite city is New York. He has a daughter who resides there and he tries to visit her at least two to three times a year, which usually includes seeing some Broadway production. Unfortunately, his loving wife Deb passed away in 2012. He enjoys spending time with his children and grandchildren, trying to pass on his other major skill as a cook and baker which he started learning from his mother at an early age. John is also an avid motorcyclist. His past work with the Sioux Empire Community Theatre includes *Noises Off*, *Les Misérables*, *The Lion, the Witch and the Wardrobe*, *Little Shop of Horrors*, *Freckleface Strawberry*, *Avenue Q*, *Fiddler on the Roof*, *The Musical Adventures of Flat Stanley*, *Agatha Christie's The Mousetrap*, *Rent*, *Lost in Yonkers*, *Rock of Ages*, *Jesus Christ Superstar* as well as assisting with the summer workshop sets. He would like to personally thank all the volunteers who have come to assist with the production of the sets as many hands make light work.

MATT COOK / *Light Designer*

Matt has loved this show for many years because it speaks of community, of positivity, and of family. Matt is excited to be coming back to it again, and of the chance to bring out the power of theatre during this strange time. He hopes you enjoy and have a wonderful holiday season.

MEET THE CREW

SAM LOPEZ | *Paint Charge*

After a childhood of putting on skits for the family' Sam Lopez has been involved in theatre since the 80's starting in high school. They attended Augustana College for 3 years as a Theatre and Fine Arts double major and volunteered countless hours in local community-based theatre in Sioux Falls, Yankton, Los Angeles, and Germany. They founded PerformUS guerilla street theatre here in Sioux Falls in the late 90's, and are now working to bring a mix of art, technology and experimental theatre to Sioux Falls.

ANNA CRAWFORD | *Hair Stylist*

Anna is happy to be back to combine her love of theatre, hair and history for this show. She has been creating hairstyles for the stage since the late 1980's. Her last work was seen in the show, *Lend Me a Tenor*. Prior to that, she designed the hair and traveled with the Sioux Empire Community Theatre's show, *Steel Magnolias* last fall.

Not a stranger to the stage, she is most happy off the stage, behind the chair. In her spare time she can be found doing one of her numerous hobbies, including stained glass.

BRIAN ADAMS | *Sound Designer*

Originally from the Black Hills, Brian has a Bachelor of Fine Arts in scenic and sound design from University of South Dakota and is owner of Adams Production Services, an audio, lighting, and theatrical production and installation company in Vermillion. He also works as a broadcast engineer for South Dakota Public Broadcasting, and enjoys songwriting and playing guitar when he's not busy building or fixing things.

Courtesy Policy

- Audio/Video taping and photography of this production is strictly forbidden.
- Please turn off or silence all electronic devices.
- Food and drink sold at the concession stand are allowed in the Orpheum Theatre.
- Please make sure that when you parked your car, you paid attention to all posted warnings. If you do not adhere to the posted warnings, your car may be towed at your own expense.
- Enjoy the show and please help spread the news about this production. Share with others on Facebook and Twitter. Please include #HEYSECT in your tweet.

A spotlight shining down from the top left corner of a dark stage, creating a bright beam of light that illuminates the text below.

Put Your Business In The Spotlight.

When your business, group or organization needs to stand out, contact Queen On The Scene for custom enamel pins.

*Queen On The Scene is the proud creator of the '120 Club Pin' for the Sioux Empire Community Theatre.

www.QueenOnTheScene.com

MEET THE STAFF

2020 - 2021 Board of Directors

Rick Weiland – *President*
Sarah Tuntland – *Treasurer*
Steve Veenhof – *Secretary*
Shelli Masek
Toby Kane
Ryan Reiffengerger
John McLaughlin
Tammi Haverly
Joe Obermueller
Fernando Bula-Rudus
Thomas Kapusta
Kevin Cole
Korena Keys

Staff

Robin Byrne
Executive Director

Sarah Larson
Administrative Assistant

Jesse Jensen
Production Manager

Trina Kuper
Bookkeeper

Kristy Morris
Ad Sales
ads@siouxfallstheatre.com

Volunteers

To find out more about volunteer opportunities, check out our website:

SiouxFallsTheatre.com

SPECIAL THANK YOUS

O’Gorman High School

Furniture USA

Mini-Movers

Asbury United Methodist Church

University of Sioux Falls



Special thanks to the team at 3M Brookings
for their contributions to SECT's COVID-19
Safety Plan.

3M is a proud supporter of the arts.

Ready to see you.

*Sanford Health is committed to delivering the
care you need, when you need it. Because even
when the world looks different, you can be
confident we've taken every step to keep you
safe while you're in our care.*

*Call your local clinic or visit sanfordhealth.org
to make an appointment.*

We're standing with you.

SANFORD
HEALTH

039024-00544 11/20





SEASON 18



IT'S A WONDERFUL LIFE

A LIVE RADIO PLAY

December 1 - 13, 2020



THE MUSIC MAN

MEREDITH WILLSON'S

March 2 - 14, 2021



Disney BEAUTY AND THE BEAST

THE BROADWAY MUSICAL

April 20 - May 2, 2021



June 15 - 27, 2021

GET YOUR SEASON 18 TICKETS TODAY!

\$100 for all 4 shows. Single show tickets \$30.

Head to our website or call the box office at
605-367-6000.

www.siouxfallstheatre.com